



HARIO

SINCE 1921

HARIO has been dedicated to the design and production of quality heatproof glass since its founding in 1921, and currently operates the only heatproof glass factory in Japan today.

HISTORY

Since 1921

HARIO began its history as a manufacturer of laboratory glassware. In 1948, we expanded our production to household items, starting with the coffee syphon. We also began producing lenses for automotive headlights in 1980. Today, HARIO continues to make a variety of items, from microwave-safe kitchenware and coffee and tea implements, to aromatherapy and pet products.



CLEAN FACTORY

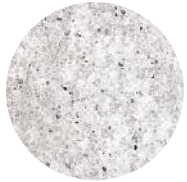
A factory without chimneys

In 1972, HARIO transitioned to all electric melting furnaces in its factory. This glassmaking technology was pioneered by HARIO through much uncertainty, trial and error. At the time, glass factories were known for smoke and dust pollution, but HARIO's breakthrough led to safer conditions for the surrounding environment as well as for the workers inside.

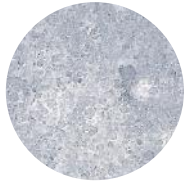


HEAT PROOF GLASS

Ingredients of Heatproof Glass/ Recycling



Silica sand



Borax



Boric acid

+



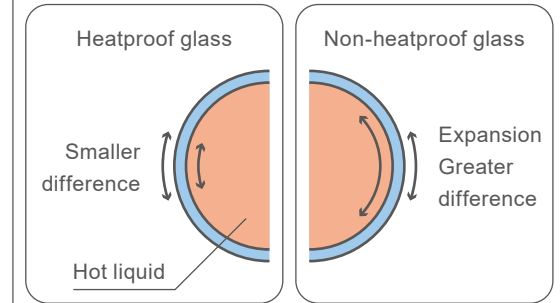
Cullet

Recycled glass from within factory

▼
All electric melting furnace



<Diagram of a heated glass cup >



Heat causes glass to expand and contract. When a hot liquid is poured into a regular glass cup, the inner surface expands at a greater rate than the outer surface, causing it to break. The surfaces of heatproof glass expand and contract at similar rates regardless of which is closest to the heat source, preventing breakage.

Special characteristics of Hario's heatproof glass products

1. Microwave-safe
2. Prevents the transfer of odor and color
3. Dishwasher-safe

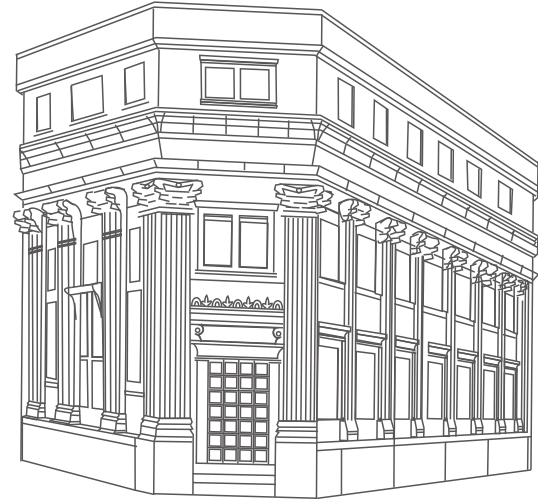
MORE ABOUT HARIO

玻璃王

HARIO (玻璃王) is Japanese for "king of glass". HARIO lives up to this name through its continued tradition of innovative, beautiful and high-quality heatproof glass.

Safe and Eco-friendly Heatproof Glass

HARIO glass is made with 100% natural minerals and is safe for your health and the environment. We add 100% natural salt to prevent bubbles from forming within the glass, making our products stronger and safer to use. Our glass is corrosion resistant as well as heatproof, for fully microwave-safe products.



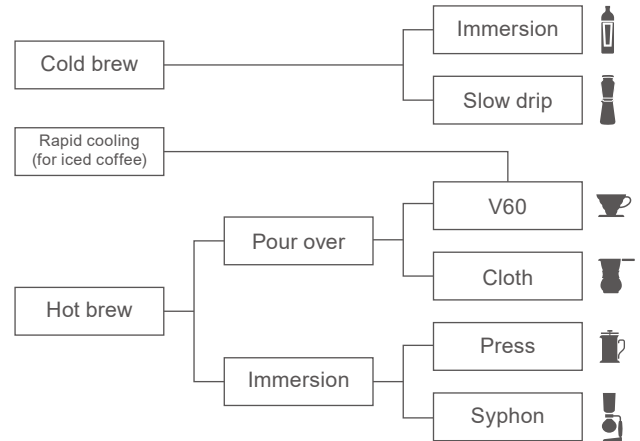
HARIO headquarter in tokyo

COFFEE



HARIO

HAND BREWING EQUIPMENT

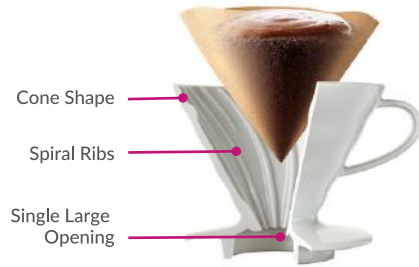


ACCESSORIES



V60

SPECIAL FEATURES



Cone Shape



The cone shape holds coffee vertically, promoting maximum contact with water for optimal extraction.

Spiral Ribs



Spiral ribs for maximum coffee expansion.

Single Large Opening

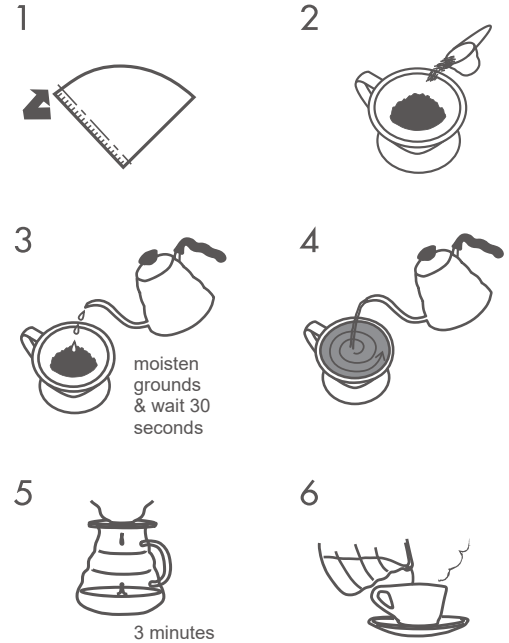


The Larger opening allows water to flow easily, giving you greater control of brewing times to achieve different flavors.

TASTE

The V60 method results in milder coffee, and allows for a greater variety of recipes and flavors.

HOW TO USE





VD-01W
C/T48 724204
W115 / D100 / H82
top opening diameter 95
Coffee grounds 24g
(plastic)



VD-01R
724228



VD-02W
C/T48 724303
W137 / D116 / H102
top opening diameter 116
coffee grounds 48g
(plastic)



VD-02R
724327



VD-01T
C/T48 723016
W115 / D100 / H82
top opening diameter 95
coffee grounds 24g
(plastic)



VD-02T
C/T48 723023
W137 / D116 / H102
top opening diameter 116
coffee grounds 48g



VD-03T
C/T36 723030
W157 / D137 / H122
top opening diameter 137
coffee grounds 72g



VDG-01W
C/T24 724402
W124 / D110 / H78
top opening diameter 97
coffee grounds 24g
(heat proof glass)



VDG-01R
724464



VDG-01B
724419



VDG-02W
CT24 724426
W128 / D115 / H95
top opening diameter 115
coffee grounds 48g
(heat proof glass)



VDG-02R
724471



VDG-02B
724433



VDG-03B
C/T24 724525
W165 / D138 / H115
top opening diameter 136
coffee grounds 72g
(heat proof glass)





VDC-01W
C/T40 723115
W119 / D100 / H82
top opening diameter 95
coffee grounds 24g
(ceramics)



VDC-01R
724013



VDC-02W
C/T36 723122
W140 / D120 / H102
top opening diameter 116
coffee grounds 48g
(ceramics)



VDC-02R
724037



VDG-01-OV
C/T24 724532
φ120 / H77
top opening diameter 97
coffee grounds 24g
(heat proof glass)



VDG-02-OV
C/T24 724549
φ120 / H95
top opening diameter 115
coffee grounds 48g



VDM-02HSV
C/T12 724129
W145 / D120 / H90
top opening diameter 120
coffee grounds 48g
(stainless steel)



VDM-02-MB
572669



VDP-02CP
C/T12 724150
W135 / D120 / H92
top opening diameter 120
coffee grounds 48g
(copper)



DT-1W
CT36 723962
φ115 / H42
top opening diameter 115
practical capacity 120ml
(ceramics)



VPS-100W
CT24 723924
W165 / D68 / H100
For 100 sheets of
VCF paper filters
(ceramics)





40 sheets

VCF-01-40W
C/T10X30 723214
coffee grounds 24g



40 sheets

VCF-01-40M
C/T10X30 723245
coffee grounds 24g



40 sheets

VCF-02-40W
C/T10X24 723221
coffee grounds 48g



40 sheets

VCF-02-40M
C/T10X24 723252
coffee grounds 48g



40 sheets

VCF-03-40W
C/T10X18 723228
coffee grounds 72g



40 sheets

VCF-03-40M
C/T10X18 723269
coffee grounds 72g



100 sheets

VCF-01-100WK NEW
C/T5X20 728769
coffee grounds 24g



100 sheets

VCF-01-100MK
C/T5X20 723801
coffee grounds 24g



100 sheets

VCF-02-100WK NEW
C/T5X16 728776
coffee grounds 48g



100 sheets

VCF-02-100MK
C/T5X16 723818
coffee grounds 48g



100 sheets

VCF-01-100W
C/T150 723313
coffee grounds 24g



100 sheets

VCF-02-100W
C/T120 723320
coffee grounds 48g



100 sheets

VCF-03-100W
C/T100 723337
coffee grounds 72g



100 sheets

VCF-01-100M
C/T150 723344
coffee grounds 24g



100 sheets

VCF-02-100M
C/T120 723351
coffee grounds 48g



100 sheets

VCF-03-100M
C/T100 723368
coffee grounds 72g



VCS-01B
C/T24 019119
W162 / D114 / H110
top opening diameter 92
practical capacity
(below band) 450ml
(microwave safe including lid)



VCS-02B
C/T24 019126
W180 / D125 / H133
top opening diameter 92
practical capacity
(below band) 700ml



VCS-03B
C/T24 019133
W185 / D137 / H157
top opening diameter 92
practical capacity
(below band) 1,000ml



XVD-36B
C/T24 019805
W130 / D107 / H106
top opening diameter 85
practical capacity 360ml
(microwave safe including lid)



XVD-60B
C/T24 019812
W137 / D121 / H128
top opening diameter 85
practical capacity 600ml



XVD-80B
C/T24 019829
W143 / D132 / H145
top opening diameter 85
practical capacity 800ml



XGS-36TB
C/T24 020108
W130 / D107 / H99
top opening diameter 77
practical capacity 360ml
(microwave safe including lid)



XGS-60TB
C/T24 020115
W145 / D121 / H120
top opening diameter 77
practical capacity 600ml



XGS-80TB
C/T24 020122
W150 / D129 / H138
top opening diameter 77
practical capacity 800ml



VCWN-40-OV
C/T24 019324
W177 / D118 / H104
top opening diameter 88
practical capacity 400ml



VCWN-60-OV
C/T24 019331
W182 / D128 / H121
top opening diameter 88
practical capacity 600ml



VDD-02B
C/T12 142558
W135 / D125 / H198
top opening diameter 115
practical capacity
(below band) 700ml
includes 40 sheets of
VCF-02W



VHS-60W
C/T12 220560
W161 / D127 / H142
top opening diameter 80
practical capacity 550ml



VHS-60R
220577



VHS-60B
220584



VHS-80W NEW
C/T12 220973
W164 / D132 / H162
top opening diameter 80
practical capacity 750ml



VHS-80B
220591



VCND-02B-EX
C/T12 728301
W170 / D125 / H220
practical capacity 600ml
includes 40 sheets of
VCF-02W



HCD-2T
C/T24 514164
W111 / D90 / H138
top opening diameter 72
practical capacity 400ml



HCD-600T
C/T24 514157
W125 / D104 / H165
top opening diameter 86
practical capacity 600ml



XVDD-3012W
C/T12 020290
W140 / D121 / H210
practical capacity 600ml
includes 100 sheets of
VCF-02M



VDS-3012R
C/T12 142268
W130 / D107 / H174
practical capacity 360ml
includes 40 sheets of
VCF-01M



VCS-02R
C/T18 020665
W180 / D125 / H220
top opening diameter 92(pot)
practical capacity 600ml
includes 40 sheets of
VCF-02M



VCSD-02CBR
020658

IMMERSION DRIPPER

SPECIAL FEATURES

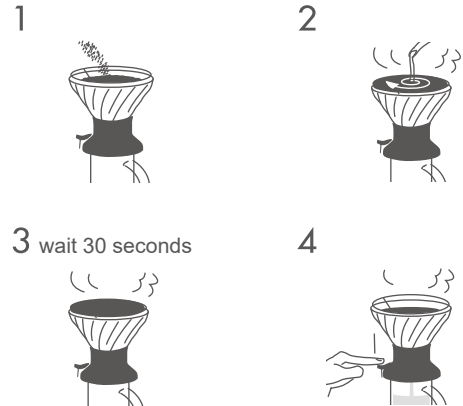
- 1.Extracts coffee by immersing ground coffee in hot water.
- 2.Allows anyone to extract coffee evenly.
- 3.Pour coffee with the press of a switch.

TASTE

Makes a clean and stable taste coffee with no sediment.
Favorite taste is easily reproducible by making a recipe.



HOW TO USE





SSD-200-B
C/T12 728165
W118 / D115 / H133
top opening diameter 115
finished capacity 200ml
includes 40 sheets of VCF-02W



SSD-5012-B
C/T12 728172
W130 / D115 / H215
top opening diameter 115
dripper:finished capacity 200ml
server:practical capacity 300ml
includes 40 sheets of VCF-02W



OCM-1-B
C/T24 140936
W118 / D93 / H93
top opening diameter 80
practical capacity 170ml



NEL DRIP POT



SPECIAL FEATURES

- 1.You can achieve different flavors with different pour techniques. Reusable cloth filter.
- 2.Reusable cloth filter.
- 3.Traditional brewing method.

TASTE

The cloth filter allows for maximum bloom of your ground coffee, resulting in a rich and smooth cup.



DPW-1
C/T12 331723
φ95 / H168
top opening diameter 93
finished capacity 240ml



DPW-3
C/T12 331730
φ110 / H195
top opening diameter 101
finished capacity 480ml



DPW-1-OV
C/T12 131811
φ95 / H168
top opening diameter 93
finished capacity 240ml



DPW-3-OV
C/T12 131828
φ110 / H195
top opening diameter 101
finished capacity 480ml

STAINLESS STEEL DRIPPER



SPECIAL FEATURES

1. Same brewing method as V60.
2. Reusable filter.
3. Fewer coffee solids for a cleaner cup.

TASTE

Stainless steel filters allow coffee oils through into your cup that paper and cloth filters don't, resulting in a creamier mouthfeel.



DMD-01-HSV
C/T48 727960
W132 / D109 / H81
top opening diameter 94
coffee grounds 24g



DMD-02-HSV
C/T48 727977
W148 / D123 / H96
top opening diameter 108
coffee grounds 24g



CFOD-1B
C/T24 171404
W115 / D110 / H82
(includes the attachment)
coffee grounds 12g



CFOD-02-B
C/T24 171473
W121 / D135 / H105
coffee grounds 48g



CFOD-02-R
171626



CFOD-2B
C/T24 171008
W150 / D105 / H171
top opening diameter 96
practical capacity 300ml

FRENCH PRESS

SPECIAL FEATURES

- 1.Can be used for both coffee and tea.
- 2.Simplest and most effortless way to make hot coffee by hand.
- 3.No additional equipment or accessories needed to make coffee or loose leaf tea.

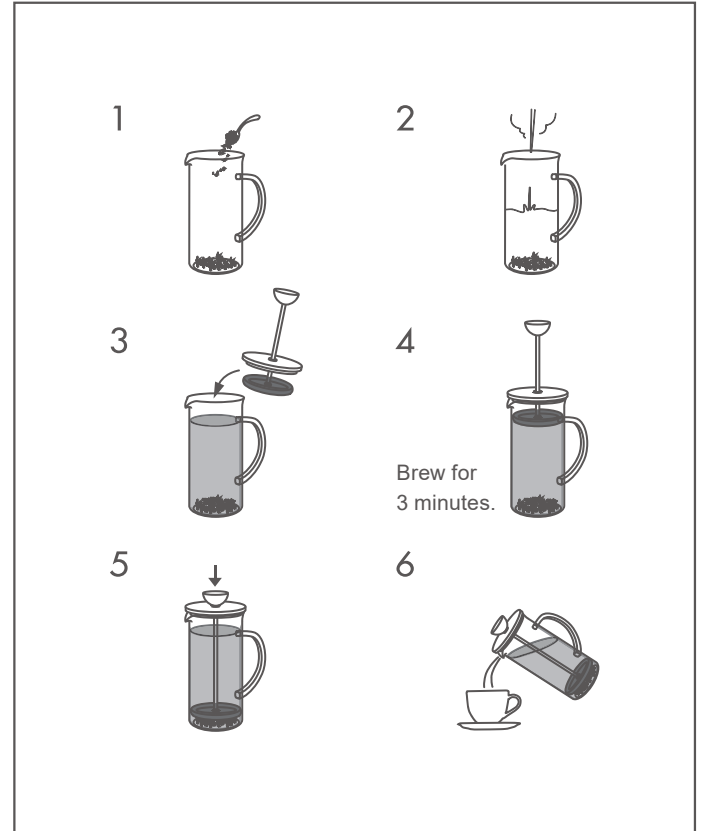
TASTE-COFFEE

Stainless steel filters allow coffee oils through into your cup that paper and cloth filters don't, which results in a creamier mouthfeel.

TASTE-TEA

Lowering the plunger halts the tea brewing process, making it easier to adjust the strength of your tea.

HOW TO USE





CPSS-2-TB (Black)
C/T24 153608
W113 / D78 / H172
top opening diameter
74
practical capacity
240ml



CPSS-2-R
153615



THJ-2-HSV
C/T12 110571
W110 / D87 / H166
top opening diameter
73
practical capacity
300ml



THJ-4-HSV
C/T12 110572
W139 / D113 / H183
top opening diameter
90
practical capacity
600ml



THA-2SV
C/T12 102514
W135 / D80 / H185
top opening diameter
73
practical capacity
300ml



THA-4SV
C/T12 104518
W155 / D95 / H205
top opening diameter
90
practical capacity
600ml



THJN-2HSV
C/T12 221253
W110 / D78 / H179
top opening diameter
73
practical capacity
300ml



THN-2-B
C/T12 105782
W114 / D76 / H167
top opening diameter
73
practical capacity
300ml



THN-4-B
C/T12 105799
W134 / D94 / H183
top opening diameter
90
practical capacity
600ml



THW-2-OV
C/T24 153974
W116 / D176 / H160
top opening diameter
73
practical capacity
300ml



THW-4-OV
C/T24 153981
W144 / D94 / H174
top opening diameter
90
practical capacity
600ml



CPSW-2-OV
C/T12 153714
W114 / D80 / H170
top opening diameter
73
practical capacity
300ml



CPSW-4-OV
C/T12 153721
W133 / D95 / H186
top opening diameter
90
practical capacity
600ml



DGC-40-OV
C/T12 221901
φ128 / H224
top opening diameter
99
practical capacity
400ml

SYPHON



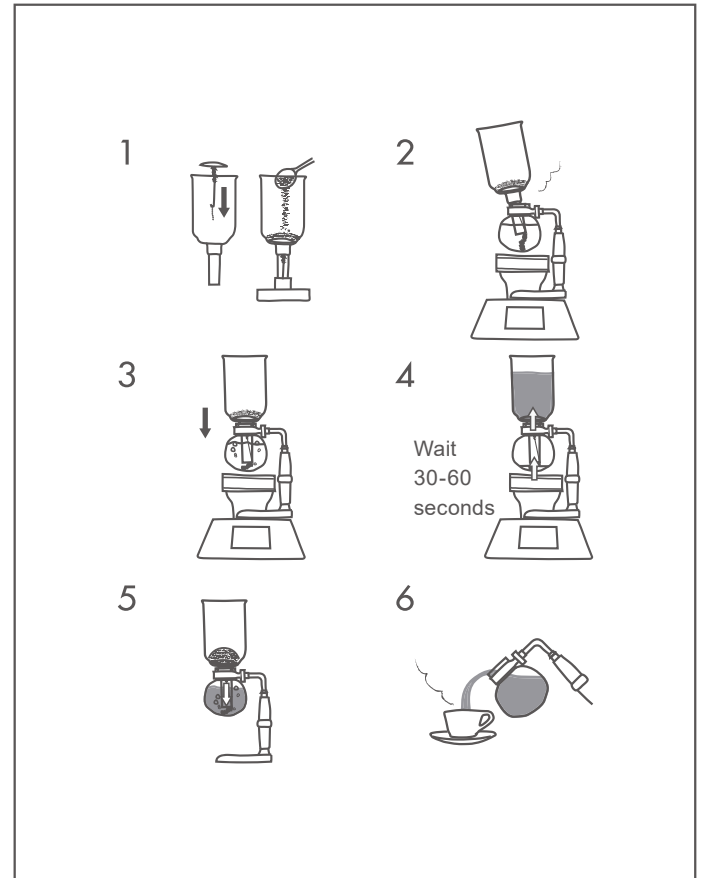
SPECIAL FEATURES

1. High temperature brewing.
2. Brewing process is entertaining to watch.

TASTE

Makes a clean coffee with no sediment, while maintaining pronounced flavors.

HOW TO USE





MCA-3
C/T10 525016
W165 / D115 / H290
top opening diameter 73
(upper)
practical capacity 360ml
includes a 50 sheets of
paper filter



TCA-2
C/T12 503014
W160 / D95 / H340
top opening diameter87
(upper)
practical capacity 240ml
includes a cloth filter



TCA-3
C/T12 503113
W160 / D95 / H350
top opening diameter 87
(upper)
practical capacity 360ml



TCA-5
C/T12 503212
W160 / D110 / H360
top opening diameter 101
(upper)
practical capacity 600ml



NXA-5
C/T12 502918
W115 / D180 / H390
top opening diameter
109(upper)
practical capacity 600ml
includes a metal filter and
a cloth filter



SCA-5
C/T4 502901
W150 / D186 / H355
top opening diameter
130(upper)
practical capacity 600ml
includes a metal filter and
a cloth filter

KASUYA SERIES

Designed by Tetsu Kasuya

2016 World Brewers Cup Champion Tetsu Kasuya has collaborated with HARIO to design a user-friendly mini kettle, thoughtfully designed cupping tools, and a specially formulated dripper for his "4:6 method" - a brewing method based on the concept of "delicious coffee anyone can make at home."



KDC-02-B
C/T36 010628
W140 / D120 / H102
top opening diameter
116
1-4 cups



KDK-300-MB
C/T24 010611
W165 / D90 / H100
top opening diameter 70
practical capacity 300ml



KDK-500-MB NEW
C/T24 010666
W196 / D100 / H110
top opening diameter 80
practical capacity 500ml



KCB-260-B
C/T36 010635
φ93 / H65
top opening diameter
93
full capacity 260ml



KCS-1-MB
C/T48 010642
W166 / D44 / H26

COLD BREW COFFEE BOTTLE



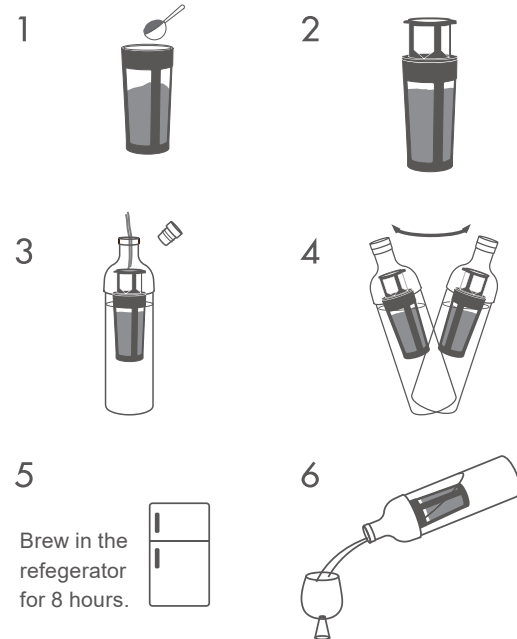
SPECIAL FEATURES

1. Easy to use.
2. Mesh filter specially formulated for ground coffee.
3. Makes iced coffee using only coffee and room temperature water.

TASTE

Mild flavor with a hint of bitterness. Iced coffee made without added ice does not become as diluted and can have a richer taste.

HOW TO USE



COLD BREW DRIP TOWER



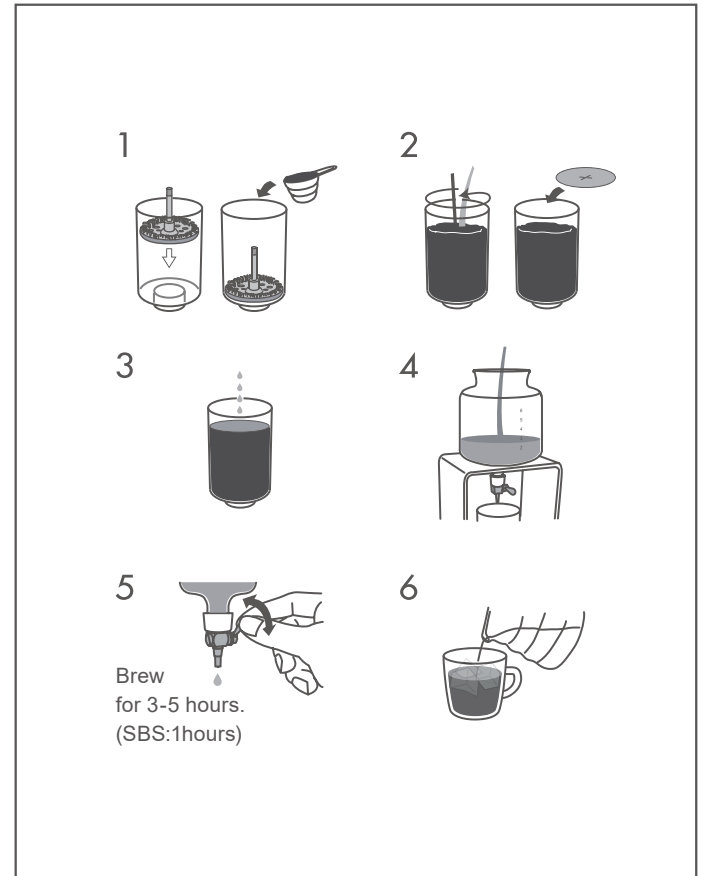
SPECIAL FEATURES

1. Visually appealing as well as functional.
2. Change the taste of your coffee by adjusting the drip rate.
3. Provides a distinct taste that is unique to slow drip cold brew.

TASTE

A combination of drip and immersion, the cold brew slow drip method results in a thinner cup with reduced bitterness and complex flavor.

HOW TO USE





FIC-70-MC
C/T24 033436
W87 / D84 / H300
top opening
diameter 71
finished capacity
650ml
5cups



FIC-70-CBR
033443



WDD-5-PGR NEW
C/T12 163492
W107 / D102 / H304
top opening
diameter 91
practical capacity
600ml
includes 50 sheets
of paper filter
5cups



SBS-5B
C/T12 163263
φ116 / H360
top opening
diameter 73
practical capacity
600ml
includes 50 sheets
of paper filter
5cups



WDC-6
CT6 163201
W150 / D129 / H455
top opening
diameter 77
finished capacity
780ml
includes 50 sheets
of paper filter
2-6cups



WDW-6
C/T6 163225
W205 / D135 / H475
top opening
diameter 77
finished capacity
780ml
2-6 cups



PTN-5BZ
C/T6 163379
W190 / D170 / H290
top opening
diameter 82
finished capacity
600ml
5cups



CBS-10HSV
C/T24 036871
W100 / D94 / H290
top opening
diameter 88
finished capacity
1,000ml



MCPN-7R
C/T24 164314
W138 / D94 / H208
top opening
diameter 88
finished capacity
600ml
5cups



MCPN-7CBR
164307



MCPN-14R
C/T24 164338
W138 / D94 / H294
top opening
diameter 88
finished capacity
1,000ml
8cups



MCPN-14CBR
164321



VIG-02T
C/T12 142671
W165 / D120 / H235
top opening
diameter 116
finished capacity
700ml
includes 40 sheets
of VCF-02W



VIC-02B
C/T18 142138
W180 / D120 / H220
top opening
diameter 116
practical capacity
700ml
includes 40 sheets
of VCF-02M



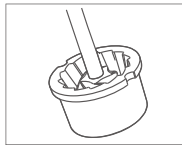
WDF-6
C/T1 163386
W205 / D205 / H985
top opening
diameter 77
practical capacity
780ml
includes 40 sheets
of VCF-03W
2-6cups

GRINDER



SPECIAL FEATURES

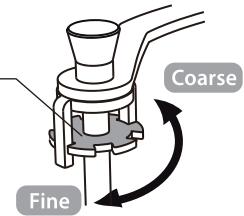
1. Ceramic burr is washable and more durable.
2. Gives an even grind every time.
3. Grind size is easy to adjust.



HOW TO CHANGE GRIND SIZE

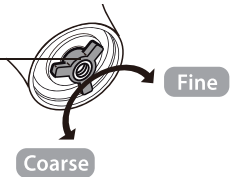
Grind size adjustment dial ①

Lock the grind adjustment dial in the desired position. Turn the dial clockwise for a fine grind, counterclockwise for coarse.



Grind size adjustment dial ②

Rotate to the right (clockwise) for finer grounds or to the left (counterclockwise) for coarser grounds.



Equipment-appropriate grind size chart				
Particle size	Fine	Medium fine	Medium	Coarse
Equipment				
Paper filter		●	●	
Mesh/steel filter			●	
Nel drip		●	●	
Syphon		●	●	
Water drip	●	●		
Coffee maker		●	●	



MCS-2DTB
 C/T12 707733
 W172 / D93 / H231
 top opening diameter 90
 coffee grounds 100g
 washable grinder burr-
 stabilizer plate



MMCS-2B
 C/T12 707740
 W167 / D95 / H195
 top opening diameter 88
 coffee grounds 100g
 washable grinder die-cast
 aluminum handle



MCD-2
 C/T12 707337
 W143 / D88 / H208
 coffee grounds 35g



MXR-2TB
 C/T12 707627
 W183 / D75 / H175
 coffee grounds 40g
 washable grinder



MMHN-4
 C/T20 707320
 W208 / D105 / H215
 top opening diameter 79
 coffee grounds 120g
 glass is not heatproof
 glass



MCW-2-OV
 C/T12 707375
 W167 / D85 / H215
 coffee grounds 30g



CM-502C
 C/T12 707467
 W152 / D104 / H231
 coffee grounds 40g



MSG-2-T
 C/T24 707894
 W150 / D53 / H190
 top opening diameter 46
 coffee grounds 24g
 washable grinder



MSG-2-TB
 C/T24 707887



MSS-1DTB
 C/T24 707726
 W150 / D72 / H220
 top opening diameter 70
 coffee grounds 24g
 washable grinder



MMSP-1-HSV
 C/T24 707818
 W150 / D74 / H210
 top opening diameter 69
 coffee grounds 24g
 washable grinder die-cast
 aluminum handle



MCW-1-B
 707801



SPECIAL FEATURES

1. This product can be used as a manual grinder or an electric grinder depending on the situation.
2. The powerful motor which can easily grind even light-roast beans, allows for fast and convenient grinding.
3. A compact design and a rechargeable lithium battery for cordless operation make it conveniently portable.



EMS-1B NEW

C/T12 708273

W36 / D36 / H180

This is an electric motor for the MSG-2/ MSS-1. This product cannot be used by itself to grind coffee beans.

Make sure to use it with the coffee mill. (MSG-2/MSS-1)



EMSG-2B NEW

C/T6 708136

W59 / D53 / H332

(when setting)
coffee grounds 24g

SPECIAL FEATURES

1. The grind size can be adjusted from medium to fine grinding, which is optimal for hand drip.
2. The burr is a stainless steel cone-shaped burr made for pour over.
3. Equipped with switch pad designed for V60 dripper. (EVCG)



EVC-8W NEW
C/T2 708181
W130 / D185 / H335
coffee grounds 100g



EVC-8B
707986



EVCG-8B
C/T2 708181
W133 / D220 / H390
coffee grounds 100g










KETTLE



SPECIAL FEATURES

- 1.Slim spout for an accurate and precise pour.
- 2.Easy to hold handle.
- 3.Compatible with various heat sources.
- 4.Electric kettle shuts off automatically.

Cooking utensils / Heat source			
Product Utensil	VKB/VKF/BDK/VKW	VKBN-90CP/ VKB-70HSV	EVKB/EVKT
GAS 	●	●	×
ELECTRIC 	●	●	×
SHEATHED 	●	●	×
HALOGEN 	●	●	×
RADIANT 	●	●	×
INDUCTION 	●	×	×
PLUG 	×	×	●



VKB-70HSV
C/T12 021426
W255 / D115 / H140
top opening diameter 71
practical capacity 500ml



VKB-100HSV
C/T12 021136
W295 / D144 / H130
top opening diameter 77
practical capacity 600ml



VKB-120HSV
C/T12 021006
W274 / D144 / H147
top opening diameter 77
practical capacity 800ml



VKB-120-MB
021006



VKBN-90CP
C/T6 021099
W290 / D126 / H145
top opening diameter 71
practical capacity 700ml



EVKB-80HSV
C/T6 021341
W300 / D156 / H175
top opening diameter 77
capacity : minimum 150ml
maximum 800ml



EVT-80-HSV
C/T6 021686
W300 / D190 / H185
top opening diameter 77
capacity : minimum 300ml
maximum 800ml



VKF-120-HSV
C/T12 021570
W263 / D144 / H150
top opening diameter 77
practical capacity 800ml



VKF-120-MB
021587



VKW-120-HSV
C/T12 021716
W310 / D144 / H160
top opening diameter 77
practical capacity 800ml



BDK-80-W
C/T6 021501
W280 / D136 / H170
top opening diameter 77
practical capacity 800ml



DKG-140-W NEW
C/T12 021761
W275 / D137 / H155
top opening diameter 77
practical capacity 1,000ml



DKG-140-B NEW
021778



VKA-35-TB NEW
C/T24 021754
W177 / D78 / H128
top opening diameter 78
practical capacity 350ml

STICK BOTTLE



SPECIAL FEATURES

1. Carry around fresh-brewed coffee and iced coffee maintaining desired temperatures.
2. They are pocket-sized and portable. (SSB-140 only)
3. Remove the lid, put a dripper directly onto it, and go out with fresh-brewed coffee. (SSB-350 only)



SSB-140-GR NEW
C/T24 222526
φ46 / H156
top opening diameter 34
practical capacity 140ml



SSB-140-B NEW
222519



SSB-350-GR NEW
C/T24 222540
φ66 / H165
top opening diameter 53
practical capacity 350ml



SSB-350-B NEW
222533

INSULATED MUG & TUMBLER WITH LID



SPECIAL FEATURES

- 1.The vacuum stainless-steel mug with lid is convenient to use in the office and at home.
- 2.Put a dripper directly onto it and enjoy coffee either hot or iced.
- 3.With the sliding lid, hot coffee stays hot. It prevents coffee from spilling, allowing you to move about smoothly.



SMF-300-GR NEW
C/T24 222502
W119 / D88 / H102
top opening diameter 85
practical capacity 300ml



SMF-300-B NEW
222496



STF-300-GR NEW
C/T24 222564
W79 / D76 / H150
top opening diameter 74
practical capacity 300ml



STF-300-B NEW
222557

SCALE

SPECIAL FEATURES

- 1.Integrated timer makes following coffee recipes easy.
- 2.Sensitive to changes of 0.1g from min. of 2g to max. of 2,000g.

SPECIFICATION

	VST	VSTM
MIN-MAX weight	2-2,000g	
Unit of display	2-200g:0.1g / 200-500g:0.5g / 500-2,000g:1g	
MAX count up time	90 minutes 59 seconds	
Power source	DC3V 2 x AAA batteries	Nickel metal hydride battery 3.6V Battery run time / About 80 hours Charging time / About 4 hours Charging input / DC 5V 200mA *USB charging cable (50cm) included



VST-2000B
C/T20 021211
W120 / D190 / H29
unit of display : 2-2000g
maximum count up time :
99 minutes 59 seconds



VSTM-2000HSV
C/T20 021310
W120 / D175 / H31
unit of display : 2-2000g
maximum count up time :
99 minutes 59 seconds



Timer Scale





MCN-200R
C/T24 413672
φ99 / H142
top opening diameter 96
coffee grounds 200g
full capacity 800ml



MCN-200B
413627



MCN-300R
C/T24 413689
φ99 / H189
top opening diameter 96
coffee grounds 300g
full capacity 1,000ml



MCN-300B
413634



MCNT-S-B
C/T24 413849
W120 / D87 / H110
top opening diameter 85
coffee grounds 130g
full capacity 480ml



MCNJ-200-W NEW
C/T24 413917
φ99 / H147
top opening diameter 96
coffee grounds 200g
full capacity 800ml



MCNJ-200-B NEW
413924



MCNJ-300-W NEW
C/T24 413931
φ99 / H194
top opening diameter 96
coffee grounds 300g
full capacity 1,000ml



MCNJ-200-B NEW
413948



MCNT-M-B
C/T24 413856
W130 / D87 / H150
top opening diameter 85
coffee grounds 190g
full capacity 670ml



M-12SV
C/T48 716223
W96 / D53 / H35
full capacity 12ml
(stainless steel)



M-12MB
C/T48 716247
W96 / D53 / H35
full capacity 12ml
(stainless steel)



M-12CP
C/T48 716230
W96 / D53 / H35
full capacity 12ml
(copper)



M-12C
C/T48 716674
W85 / D55 / H40
full capacity 12ml
(ceramics)



M-12WD
C/T48 716667
W100 / D57 / H40
full capacity 12ml
(wood)



CMC-300-W NEW
C/T48 096615
W125 / D95 / H90
top opening diameter 95
full capacity 300ml
(ceramics)



LS-70-OW
C/T24 402768
φ72 / H173
top opening diameter 68
practical capacity-milk 70ml



LS-70-PC
402799



CQT-45BR
C/T24 402959
W145 / D105 / H205
top opening diameter 81
practical capacity-milk 100ml
(This can make foamed milk for 3
cups of cappuccino.)



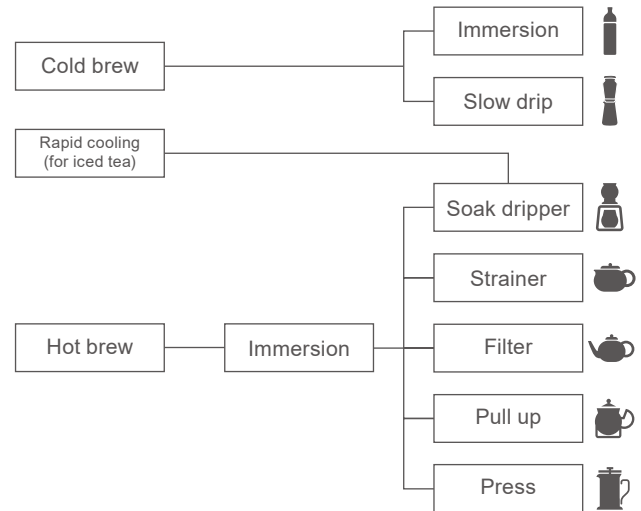
CZ-1BR
C/T24 402966
φ75 / H221

TEA



HARIO

HAND BREWING EQUIPMENT



ACCESSORIES

- Kettle
- Stand
- Warmer
- Glass
- Canister

COLD BREW TEA BOTTLE



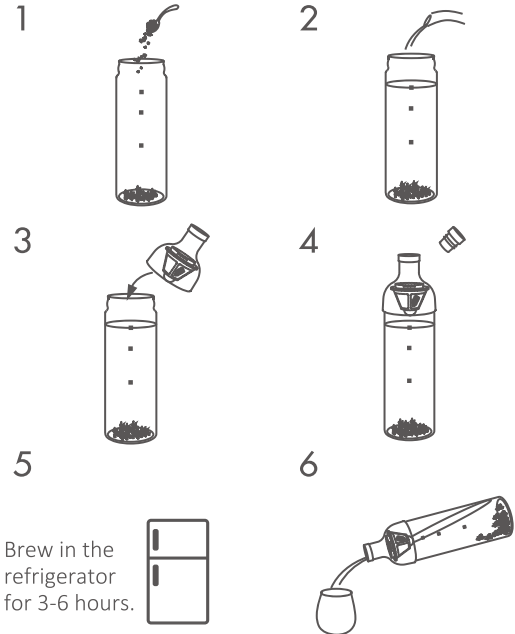
SPECIAL FEATURES

1. Filter mesh attaches to silicon spout.
2. Clog-resistant filter.
3. Suitable for any kind of tea.

TASTE

Cold-steeped tea is less bitter with a gentler aftertaste.

HOW TO USE





FIB-30-OG
C/T24 034334
W70 / D68 / H206
top opening diameter 57
practical capacity 300ml



FIB-30-R
034327



FIB-75-OG
C/T24 034426
W87 / D84 / H300
top opening diameter 71
practical capacity 750ml



FIB-75-R
034419



FIBP-40-SPR
C/T24 037830
φ74 / H240
top opening diameter 65
practical capacity 400ml



FIBP-40-SG
037847



FIE-80-PGR
C/T18 037564
φ90 / H320
top opening diameter 80
practical capacity 800ml



FIE-80-SPR
037540



FIE-80-SG
037557



KAB-120-W
C/T24 037571
W90 / Ø90 / H320
top opening diameter 85
practical capacity 1,200ml
<tritan>



KAB-120-SPR
037595



KAB-120-SG
037588

TEA DRIPPER



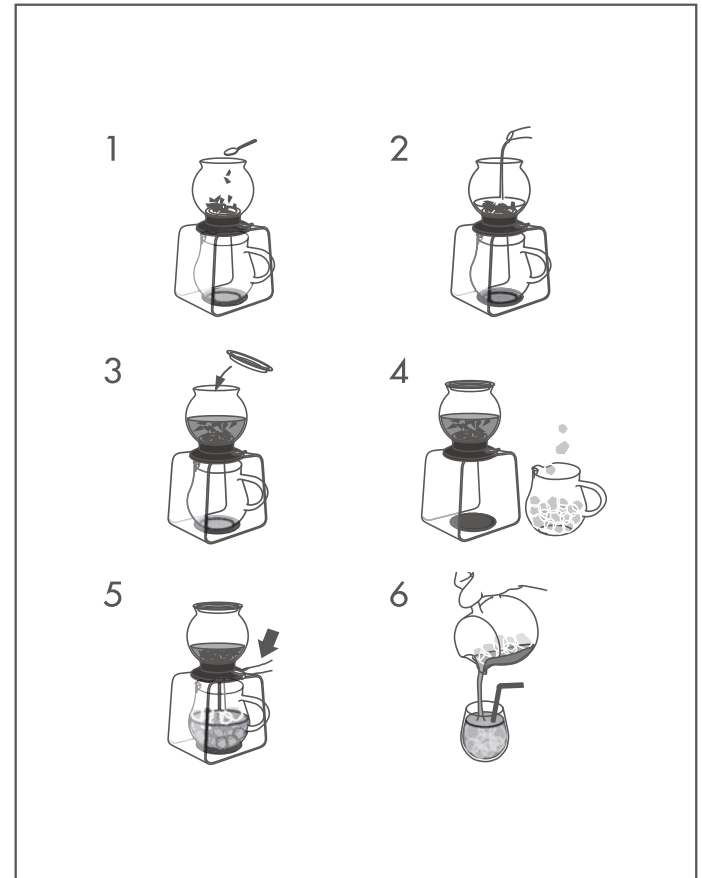
SPECIAL FEATURES

1. Pour tea with the press of a switch.
2. Gradual drip into ice-filled server allows for faster cooling.
3. Server spout is especially contoured to hold ice when pouring.

TASTE

Regular tea pots cause stronger tea to concentrate in the bottom, where it settles. For this reason, the traditional method of serving Japanese tea is to pour a bit into every cup, then pouring into each cup once more. The Tea Dripper pours from the bottom, which allows for an even pour in one step.

HOW TO USE





TDR-35B
C/T12 022331
W123 / D114 / H120
top opening diameter 110
practical capacity 350ml



TDR-5012B
C/T12 022348
W150 / D116 / H205
practical Capacity of dripper 350ml
practical Capacity of pitcher 450ml



TDR-80B
C/T12 022300
φ130 / H165
top opening diameter 100
practical capacity 800ml



TDR-8006T
C/T6 022317
W170 / D134 / H309
practical capacity of dripper 800ml
practical capacity of pitcher 800ml



TEA SERVER WITHOUT LID



SPECIAL FEATURES

1. A simple, clean design without a lid allows this tea server to serve your drinks without any hassle.
2. The body is fully transparent which allows you to see the colour of the tea.
3. The spout is made out of Tritan which is a safe and durable material with heat resistance qualities and is fully BPA FREE.

TASTE

The strainer being in the spout gives tea leaves more room to move, resulting in improved extraction.



FNC-45-T NEW
C/T24 044814
W130 / D100 / H123
top opening diameter 74
practical capacity 450ml



FNC-70-T NEW
C/T24 044821
W144 / D120 / H144
top opening diameter 74
practical capacity 700ml



TS-45-HSV NEW
C/T24 044746
W128 / D124 / H124
top opening diameter 74
practical capacity 450ml



TS-70-HSV NEW
C/T24 044760
W144 / D120 / H145
top opening diameter 74
practical capacity 700ml

TEA POT



With a heatproof glass teapot, you can enjoy the variety of colors in the tea. It comes with a large tea strainer so that the tea leaves can expand easily.



CHZ-30T
C/T24 094413
W156 / D110 / H90
top opening diameter 110
practical capacity 300ml



CHZ-45T
C/T24 094420
W168 / D120 / H100
top opening diameter 120
practical capacity 450ml



TPC-45HSV
C/T24 093928
W140 / D105 / H123
top opening diameter 67
practical capacity 450ml



TPC-70HSV
C/T24 093935
W156 / D120 / H148
top opening diameter 82
practical capacity 700ml



QSH-70 NEW
C/T12 090804
W189 / D157 / H142
top opening diameter 79
practical capacity 700ml

TEA BAG POT



SPECIAL FEATURES

1. Conveniently steep tea from a bag with no drippy mess.
2. No-slip material painstakingly designed to hold even nylon strings.
3. Top can stay on from brew to pour, keeping your tea piping hot.

TASTE

Not worrying about what to do with your used tea bag means you can relax and enjoy your tea right away, as gentle or strong as you desire.

PULL UP TEA POT



SPECIAL FEATURES

1. Enjoy loose leaf tea with the convenience of tea bags.
2. Start and stop steeping with one simple motion.
3. Full control of steeping time with no drippy mess.

TASTE

The ability to steep, stop, and re-steep with ease allows for full control of your tea's strength. Not worrying about removing leaves or over-steeping means you can relax and enjoy your tea to the last drop.



TTH-30-OW
C/T24 140820
W96 / D127 / H131
top opening diameter 85
practical capacity 300ml



TTH-30-OG
140844



TTH-30-R
140837



CHAN-2SV
C/T12 161207
W158 / D103 / H141
top opening diameter 104
practical capacity 300ml



CHAN-4SV
C/T12 161214
W168 / D117 / H160
top opening diameter 104
practical capacity 600ml



TEO-45-OV
C/T24 154117
W150 / D116 / H138
top opening diameter 82
practical capacity 450ml



TEO-70-OV
C/T24 154124
W160 / D125 / H156
top opening diameter 82
practical capacity 700ml



JUMPING LOOSE LEAF TEA POT



JP-2
C/T12 710610
W195 / D120 / H125
top opening diameter 68
practical capacity 500ml



JP-4
C/T12 710627
W225 / D137 / H130
top opening diameter 79
practical capacity 800ml



TDG-2
C/T12 412163
W215 / D120 / H125
top opening diameter 68
practical capacity 500ml



TDG-4
C/T12 412170
W235 / D137 / H130
top opening diameter 79
practical capacity 800ml

SPECIAL FEATURES

- 1.Round shape promotes "jumping" movement of leaves for best extraction.
- 2.Free-floating leaves add visual enjoyment to your tea experience.
- 3.Perfect for all types of loose leaf tea.



QSM-1
C/T24 396920
W150 / D90 / H95
top opening diameter 60
practical capacity 180ml



QSA-1SV
CT24 396913
W120 / D80 / H155
top opening diameter 59
practical capacity 220ml



JPS-60-HSV
C/T24 410954
W162 / D122 / H140
top opening diameter 82
practical capacity 600ml

TASTE

The strainer being in the spout gives tea leaves more room to move, resulting in improved extraction.



JTS-35-OW
C/T24 044630
W124 / D98 / H120
top opening diameter 70
practical capacity 350ml



JTS-35-OG
044623



JTS-35-R
044616

ONE CUP TEA MAKER



SPECIAL FEATURES

- 1.Larger strainer for better movement of leaves.
- 2.Make a single cup as deliciously as a full pot.
- 3.Lid becomes tray for strainer after use.

TASTE

The larger strainer allows tea leaves to move and to expand for optimum extraction, even in a single serving cup.



HDT-M-OG
C/T24 140752
W120 / D103 / H105
top opening diameter 83
practical capacity 200ml



HDT-M-R
140745



OTM-1NW
C/T24 340107
W139 / D103 / H104
top opening diameter 87
practical capacity 200ml



OTM-1B
340114

ENAMEL TEA KETTLE



This ingenious spout is designed to allow air to mix with water as it is poured, promoting "tea leaf jumping," which is the key to the most delicious tea. It is also designed with safety in mind, to prevent too much hot water coming out at once.



BTK-80-W
C/T12 021518
W270 / D155 / H135
top opening diameter 75
practical capacity 800ml

GREEN TEA GRINDER



Green tea is known to be nutritious, but the leaves that are usually discarded also contain many nutrients that are lost. Mixing tea powder into water is a different way of making tea that allows you to enjoy all of the flavor and nutrition your tea leaves have to offer.

This ceramic mortar grinder makes tea leaves into a smooth tea powder, perfect for making hot or cold green tea, as well as for dusting over your favorite foods. The filter mesh catches any remaining coarse leaves for a fine, consistent grind.



OMC-1-SG
C/T24 708006
W137 / D64 / H170
capacity of the powder jar:
10 grams of tea leaves



COOK

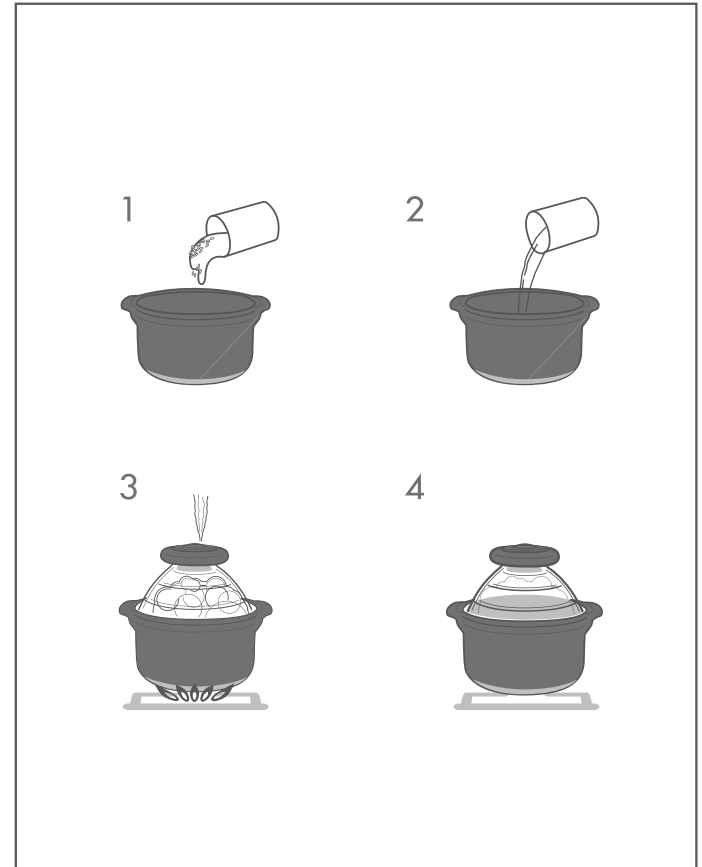
RICE COOKING POT



HOW TO MAKE RICE

1. Rinse rice several times, drain and place in pot.
2. Pour fresh water into pot and allow rice to soak for 30 mins.
3. Place on medium heat for 7-10 mins, until pot lid whistles.
4. After boiling and hear whistle blowing sound (or you see bubbling inside the pot), wait for 1 minute then stop the heat.
5. Remove from heat and allow rice to sit for 15 mins.

HOW TO USE





GNR-150-B NEW
C/T6 803855
W210 / D174 / H190
top opening diameter 150
for 2-4 servings





GNR-200-B NEW
C/T4 803862
W270 / D230 / H210
top opening diameter 200
for 4-6 servings



GIS-200
C/T6 803992
W260 / D216 / H200
top opening diameter 208
full capacity 2,800ml
for 2-6 servings



GO-2B
C/T12 803824
W190 / D190 / H87
for 4 servings

	GAS 	INDUCTION 
GNR	○	×
GIS	○	○
GDN	○	×
MIS	○	○



GDN-165-B NEW
C/T12 803619
φ210 / H140
top opening diameter 165
full capacity 700ml



GDN-225-B NEW
C/T6 803626
φ275 / H170
top opening diameter 225
full capacity 2,000ml



GDN-255-B NEW
C/T4 803633
φ310 / H185
top opening diameter 255
full capacity 3,000ml



MIS-23
C/T6 803978
φ285 / H144
top opening diameter 225
full capacity 1,900ml



MIS-26
C/T6 803985
φ315 / H156
top opening diameter 255
full capacity 2,600ml





SMS-120-B
C/T48 708037
φ55 / H153
top opening diameter 37
practical capacity 120ml
for salt & pepper



SMG-120-PGR
C/T48 708044
φ55 / H153
top opening diameter 37
practical capacity 120ml
for sesame



DBS-120G
C/T24 531222
φ55 / H135
top opening diameter 37
practical capacity 120ml



DBS-120B
531208



DBS-240G
C/T24 531239
φ55 / H203
top opening diameter 37
practical capacity 240ml



DBS-240B
531215



CMJW-200
C/T24 530331
W118 / D81 / H87
top opening diameter 81
practical capacity 200ml



CMJW-500
C/T24 530324
W150 / D105 / H120
top opening diameter 105
practical capacity 500ml



MJP-250-GR NEW
C/T12 530584
W155 / D109 / H98
top opening diameter 109
practical capacity 250ml



MJP-500-GR NEW
C/T12 530591
W173 / D128 / H123
top opening diameter 128
practical capacity 500ml



SYTN-2518-OW
C/T18 761742
S: W114 / D112 / H53 φ105
M: W142 / D138 / H65 φ131
L: W170 / D168 / H78 φ160
full capacity
250ml / 600ml / 1,200ml



SYTN-2518-R
C/T18 761759



MXP-900
C/T12 420335
φ156 / H102
top opening diameter 156
full capacity 900ml



MXP-1500
C/T12 420342
φ187 / H115
top opening diameter 187
full capacity 1,500ml



MXP-2200
C/T12 420359
φ210 / H120
top opening diameter 210
full capacity 2,200ml





DRINK



IDX-2 MSV
C/T12 928329
W162 / D130 / H147
top opening diameter 78
practical capacity 360ml



IDM-2ESV
C/T12 928206
W180 / D130 / H150
top opening diameter 78
practical capacity 360ml



SGS-80
C/T6X8 240834
φ60 / H70
top opening diameter 60
full capacity 80ml



SGS-140
C/T6X8 240841
φ69 / H90
top opening diameter 69
full capacity 140ml



VCG-10
C/T24 222014
φ92 / H103
top opening diameter 92
full capacity 300ml



VCG-15
C/T18 222021
φ100 / H133
top opening diameter 100
full capacity 450ml



HTT-2T NEW
C/T36 513068
φ88 / H152
top opening diameter 44
practical capacity 360ml



ID-4-SV NEW
C/T6 512405
W190 / D150 / H420
top opening diameter 85
practical capacity 720ml



DWS-3512 NEW
C/T12 098138
W115 / D90 / H92
top opening diameter 90
full capacity 280ml



TRG-260
C/T24 220317
φ82 / H97
top opening diameter 82
full capacity 260ml



TBG-380
C/T24 220300
φ74 / H167
top opening diameter 71
full capacity 380ml



RG-300
C/T24 240803
φ80 / H85
top opening diameter 80
full capacity 300ml



RPLN-14-OW
C/T24 031173
W135 / D92 / H288
top opening diameter
81
practical capacity
1,400ml



RPLN-14-CGR
036666



RPBN-7-NV
C/T12X2 030510
W135 / D92 / H197
top opening diameter
81
practical capacity
700ml
does not have an
individual box



RPBN-14-NV
C/T12X2 031180
W135 / D92 / H288
top opening diameter
81
practical capacity
1,400ml
does not have an
individual box



FP-7TNV
C/T15X2 035362
W92 / D88 / H190
top opening diameter
80
practical capacity
700ml
does not have an
individual box



FP-13TNV
C/T15X2 035379
W95 / D94 / H280
top opening diameter
80
practical capacity
1,300ml
does not have an
individual box



HCC-7DG
C/T24 034259
W125 / D93 / H203
top opening diameter
88
practical capacity
700ml



HCC-12DG
C/T24 034051
W125 / D93 / H290
top opening diameter
88
practical capacity
1,200ml



How to read specifications



Product Number — **XGS-36TB** — Color Symbol
Quantity per Carton — C/T24 020108 — JAN Code No.
Dimensions (mm) — W130 / D107 / H99
top opening diameter77
practical capacity 360ml
(microwave safe including lid)

*The last six numbers of JAN code are mentioned. The first 7 common numbers are 4977642.

Color and material Symbols

W: White	BR: Brown	CP: Copper
OW: Off White	CBR: Chocolate Brown	SV: Silver
TW: Transparency White	MC: Mocha	HSV: Hairline silver
NW: Natural White	R: Red	GD: Gold
PGR: Pale gray	SPR: Smoky pink	OV: Olive wood
CGR: Charcoal gray	PC: Cherry pink	
B: Black	OG: Olive green	
MB: Matte black	SG: Smoky green	
TB: Transparency Black	DG: Dark green	
T: Transparency	NV: Navy	
	TNV: Transparency Navy	





HARIO products are used in over

75

countries and regions.

HARIO CO., LTD.

9-3 Nihonbashi Tomizawa-Cho, Chuo-Ku, Tokyo 103-0006 Japan

TEL: +81-3-5614-2115 FAX: +81-3-5614-2125

Visit our
web site!



www.hario.jp



[@hario_official](https://www.instagram.com/hario_official)



[@hario_japan](https://www.instagram.com/hario_japan)



[www.facebook.com
/Hario.Global](https://www.facebook.com/Hario.Global)



[www.youtube.com
/user/hariojp](https://www.youtube.com/user/hariojp)