

HARIO

2019

SINCE 1921

Coffee



V60 Coffee Dripper

Widely recognized around the world, the V60 pour over

Why the cone shape?

The cone shaped paper filter adds depth to the coffee layer, so that the water flows to the center, expanding the amount of time the water is in contact with the ground coffee.



VD-01W

C/T48 724204
W115 • D100 • H82
top opening diameter 95
1-2cups



VD-01R

724228



VD-02W

C/T48 724303
W137 • D116 • H102
top opening diameter 116
1-4cups



VD-02R

724327



VD-01T

C/T48 723016
W115 • D100 • H82
top opening diameter 95
1-2cups



VD-02T

C/T48 723023
W137 • D116 • H102
top opening diameter 116
1-4cups



VD-03T

C/T36 723030
W157 • D137 • H122
top opening diameter 137
1-6cups



For hot drink



VDG-01W

C/T24 724402
W124 · D110 · H78
top opening diameter 97
1-2cups



VDG-01R

724464



VDG-01B

724419



VDG-02W

C/T24 724426
W128 · D115 · H95
top opening diameter 115
1-4cups



VDG-02R

724471



VDG-02B

724433



VDG-03B

C/T24 724525
W165 · D138 · H115
top opening diameter 136
1-6cups

V60 Glass Dripper

Olive Wood Series



For hot drink



VDG-01-OV

C/T24 724532
φ120 · H77
top opening diameter 97
1-2cups



VDG-02-OV

C/T24 724549
φ120 · H95
top opening diameter 115
1-4cups

V60 Ceramic Dripper



VDC-01W
 C/T40 723115
 W119 • D100 • H82
 top opening diameter 95
 1-2cups



VDC-01R
 724013



VDC-02W
 C/T36 723122
 W140 • D120 • H102
 top opening diameter 116
 1-4cups



VDC-02R
 724037

V60 Metal Dripper



VDM-02HSV

C/T12 724129
W145 • D120 • H90
top opening diameter 120
1- 4cups



VDM-02-MB

726697



VDM-02CP

724143



VDP-02CP / VDPC-02CP

C/T12 724150 / 726888
W135 • D120 • H92
top opening diameter 120
1-4cups



40 sheets

VCF-01-40W

C/T1 0×30 723214
1-2cups



40 sheets

VCF-02-40W

C/T1 0×24 723221
1-4cups



40 sheets

VCF-03-40W

C/T1 0×18 723238
1-6cups



40 sheets

VCF-01-40M

C/T1 0×30 723245
1-2cups



40 sheets

VCF-02-40M

C/T1 0×24 723252
1-4cups



40 sheets

VCF-03-40M

C/T1 0×18 723269
1-6cups



100 sheets

VCF-01-100MK

C/T 5×20 723801
1-2cups



100 sheets

VCF-02-100MK

C/T 5×16 723818
1-4cups



100 sheets

VCF-01-100W

C/T150 723313
1-2cups



100 sheets

VCF-02-100W

C/T120 723320
1-4cups



100 sheets

VCF-03-100W

C/T100 723337
1-6cups



100 sheets

VCF-01-100M

C/T150 723344
1-2cups



100 sheets

VCF-02-100M

C/T120 723351
1-4cups



100 sheets

VCF-03-100M

C/T100 723368
1-6cups

V60 Coffee Server



For microwave



Do not expose to open flames



VCS-01B

C/T24 019119
W162 · D114 · H110
top opening diameter 92
practical capacity (below band) 450ml
1-3cups
microwave safe including lid



VCS-02B

C/T24 019126
W180 · D125 · H133
top opening diameter 92
practical capacity (below band) 700ml
1-5cups
microwave safe including lid



VCS-03B

C/T24 019133
W185 · D137 · H157
top opening diameter 92
practical capacity (below band) 1,000ml
2-8cups
microwave safe including lid



XVD-36B

C/T24 019805
W130 · D107 · H106
top opening diameter 85
practical capacity 360ml
1-3cups
microwave safe including lid



XVD-60B

C/T24 019812
W137 · D121 · H128
top opening diameter 85
practical capacity 600ml
2-5cups
microwave safe including lid



XVD-80B

C/T24 019829
W143 · D132 · H145
top opening diameter 85
practical capacity 800ml
2-6cups
microwave safe including lid



XGS-36TB

C/T24 020108
W130 · D107 · H99
top opening diameter 77
practical capacity 360ml
1-3cups
microwave safe including lid



XGS-60TB

C/T24 020115
W145 · D121 · H120
top opening diameter 77
practical capacity 600ml
2-5cups
microwave safe including lid



XGS-80TB

C/T24 020122
W150 · D129 · H138
top opening diameter 77
practical capacity 800ml
2-6cups
microwave safe including lid

Coffee Server

A heatproof coffee decanter popular also in overseas cafés

Its simple shape is popular also in overseas cafés. It comes in two practical capacities: 400 ml and 600 ml. It is a compact, easy-to-use, heatproof glass coffee decanter.



For microwave



Do not expose to open flames



HDC-2T

C/T24 514164
W111 · D90 · H138
top opening diameter 72
practical capacity 400ml



new HDC-600T

C/T24 514157
W125 · D104 · H165
top opening diameter 86
practical capacity 600ml

Olive Wood Series



For hot drink



Do not expose to open flames



VCWN-40-OV

C/T24 019324
W 177 · D 118 · H 104
top opening diameter 88
practical capacity 400ml



VCWN-60-OV

C/T24 019331
W 182 · D 128 · H 121
top opening diameter 88
practical capacity 600ml



A Coffee pot designed with safety in mind, and compatible with commercial machines

A spout made of resin which is easy to pour and has good water flow. The lid is a single-push type that enables easy opening and closing. The handle is a safe two-banded design. Made with heatproof glass, this coffee pot is dishwasher safe.



Includes detachable cap.



Large opening that is easy to wash.



For hot drink



Do not expose to open flames



CDH-18CBR

C/T12 171527
W210 · D165 · H173
top opening diameter 90
practical capacity (below band) 1,800ml



Authentic coffee made with style

The dripper is based on the V60 cone shape. You can enjoy the ease of the paper filter pour over, brewing directly into a carafe. The silicone band can be removed and washed. The dripper is designed to stand by itself.



VDD-02B

C/T12 142558
 W 135 · D 125 · H 198
 top opening diameter 115
 practical capacity (below band) 700ml
 1-4cups



XVDD-3012W

C/T12 020290
 W140 · D121 · H210
 Dripper : 1-4cups
 Pot : practical capacity 600ml
 includes 40 sheets of VCF-02M



VDS-3012R

C/T12 142268
 W130 · D107 · H174
 Dripper : 1-2cups
 Pot : practical capacity 360ml
 includes 40 sheets of VCF-01M



V60 Glass Iced Coffee Maker

Iced coffee maker, in which coffee is cooled with ice while it drips. The long strainer containing ice cools the dripping coffee. This coffee maker is made with transparent materials only. Enjoy iced coffee with a clear taste in a cool manner!



For hot drink



VPD-02HSV

C/T12 142053
W 160 · D 125 · H 200
top opening diameter 115
Pot : practical capacity 700ml
includes 40 sheets of VCF-02M



For hot drink



A ring holder made of transparent silicon rubber is attached to the upper section of the dripper.

VIG-02T

C/T12 142671
W 165 · D 120 · H 235
top opening diameter 116
Pot : practical capacity 700ml
includes 40 sheets of VCF-02M

TETSU-KASUYA

The "Kasuya Model Series" produced by Tetsu Kasuya.

The series consists of an easily handled mini drip kettle, thoughtfully designed cupping tools, and a dripper suitable for the "4:6 method," a brewing method based on the concept of "easily-brewed delicious coffee for everyone."



粕谷 哲 Tetsu Kasuya

First Asian world champion of 2016 WORLD BREWERS CUP
Champion of 2015 JAPAN BREWERS CUP

Three years after Tetsu Kasuya stepped into the coffee industry, he became the first Asian world champion in the 2016 World Brewers Cup for his unique "4:6 method." He is currently active in many countries including Japan, engaged in coaching consulting for companies, product promotion, and product development. He also serves as a judge for competitions, devoting his efforts to nurturing future baristas.



KDC-02-B

C/T36 010628
W140 • D120 • H102
top opening diameter 116
1-4cups



With the concept of "easily-brewed delicious coffee for everyone," a dripper with spiral ribs was developed under the supervision of Kasuya.



The dripper is suitable for brewing strong coffee.



The use of black for the cupping bowl and spoon eliminates any visual bias.



With the mini drip kettle, one cup is dripped with ease.



KDK-300-MB

C/T24 010611
 W165 · D90 · H100
 top opening diameter 70
 practical capacity 300ml



KCB-260-B

C/T36 010635
 φ93 · H65
 top opening diameter 93
 full capacity 260ml



KCS-1-MB

C/T48 010642
 W166 · D44 · H26

Easy to pour, coffee drip kettle with a slim spout

This drip kettle with a slim spout makes it easier to control the amount and speed of hot water being poured, making it useful when brewing a V60. 500 ml compact size has been added to the Buono series.

V60 Coffee Kettle Buono



For open flames



Compatible with open flames and induction heating



Compatible with open flames and induction heating.

※ VKB-100 • VKB-120



new

VKB-70HSV

C/T12 021426
W255 • D115 • H140
top opening diameter 71
practical capacity 500ml



VKB-100HSV

C/T12 021136
W295 • D144 • H130
top opening diameter 77
practical capacity 600ml



Compatible with open flames and induction heating



For open flames



VKB-120HSV

C/T12 021006
W274 • D144 • H147
top opening diameter 77
practical capacity 800ml



VKB-120-MB

C/T12 021563
W292 • D144 • H147
top opening diameter 77
practical capacity 800ml



VKBN-90CP

C/T6 021099
W290 • D126 • H145
top opening diameter 71
practical capacity 700ml

Ideas for an easy-to-pour kettle are realized in the spout shape and the wooden handle that fits comfortably in one's hand

Ideas for an easy-to-pour kettle are realized in the spout shape and the wooden handle that fits comfortably in one's hand.



The shape of the handle is designed for easy dripping. You can place your thumb on the top of it.



You can also wrap your thumb around the top of the handle for a firmer grip.



The pursuit of easy pouring resulted in this shape.



Compatible with open flames and induction heating.

V60 Coffee Kettle Fit



Compatible with open flames and induction heating



VKF-120-HSV

C/T12 021570
W263 · D145 · H150
top opening diameter 77
practical capacity 800ml



VKF-120-MB

021587



Compatible with open flames and induction heating



V60 Coffee Kettle Wood

new

VKW-120-HSV

C/T12 021716
W310 · D144 · H160
top opening diameter 77
practical capacity 800ml



Compatible with open flames and induction heating.



A kettle with temperature control for easy operation

This drip kettle with a slim spout Feel your taste change by only 1°C difference. This is the electric kettle for hand dripping with the temperature control from 60°C to 96°C.

Heating and heat-retention status is displayed in different colors for easy recognition. (EVT)



Both the EVKB and EVT models store the cord at the bottom.



The temperature of water can be set between 50 and 96 degrees C in 1 degree C increments. The screen is orange while water is being heated. (EVT)



When the water reaches the set temperature and the heat-retention mode starts, the screen turns green. (EVT)



Temperature is displayed until heat retention is done and the kettle turns off automatically. (EVT)



EVKB-80HSV

C/T6
W300 · D156 · H175
top opening diameter 77
capacity : minimum 150ml maximum 800ml



new

EVT-80-HSV

C/T6
W300 · D190 · H185
top opening diameter 77
capacity : minimum 300ml maximum 800ml

V60 Drip Thermometer

A thermometer for pour over



VTM-1B (Display in Celsius)
VTM-1B-U (Display in Fahrenheit)

C/T24
 021181 (1B) / 021198 (1B-U)
 [Thermometer]
 W45 • D107 • H140
 [Thermometer+ Lid]
 W83 • D107 • H140



Real time digital display



The thermometer and lid are detachable.



Measure the temperature at the root of the nozzle.



V60 Drip Scale

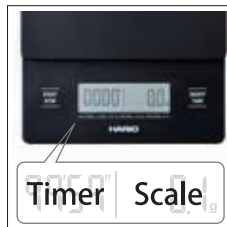
Requirements for brewing delicious coffee

In order to brew delicious coffee, quantity and extraction time are essential. The V60 drip scale is used to simultaneously measure both of these factors.

*The V60 metal drip scale is equipped with a rechargeable battery and has a backlight design.



Both extraction quantity and extraction time can be measured simultaneously.

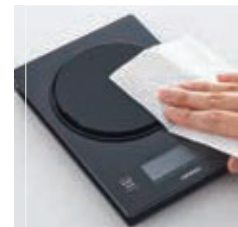


Timer Scale

Due to its thinness, compact storage is possible.



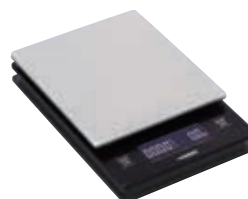
The stainless weighing platform can be removed by turning.



Dirt is easily wiped off, and care for the device is simple.



VST-2000B
 C/T20 021211
 W 120 • D 190 • H 29 unit
 of display : 2-2000 g
 maximum count up time :
 99 minutes 59 seconds
 iF DESIGN AWARDS 2013



VSTM-2000HSV
 C/T20 021310
 W 120 • D 175 • H 31
 unit of display : 2-2000 g
 maximum count up time :
 99 minutes 59 seconds



An enameled drip kettle

The thin spout drip kettle enables you to easily control the amount and speed of water, useful for brewing delicious coffee. Enjoy the natural atmosphere produced by the combination of enamel and natural wood.



Compatible with open flames and induction heating



BDK-80-W

C/T6 021501
 W 280 • D 136 • H 170
 top opening diameter 77
 practical capacity 800ml



Induction heater (IH) and direct flame are available.



The thin spout is suitable for dripping.



BCN-100-W

C/T12 413726
 φ 102 • H 72
 top opening diameter 102
 full capacity 400ml
 practical capacity : tea leaves • coffee grounds/ 100g(approx.)



BCN-200-W

C/T12 413733
 φ 102 • H 143
 top opening diameter 102
 full capacity 800ml
 practical capacity : tea leaves • coffee grounds/ 200g(approx.)

A drip tray is now offered for resting a dripper after brewing coffee



This porcelain drip tray is for V60 drippers in 01 and 02 size.
After brewing coffee, move the dripper here straight from the server.



DT-1W

C/T36 723962
φ115 • H42
top opening diameter 115
practical capacity 120ml



The tray is also convenient for used tea bags.

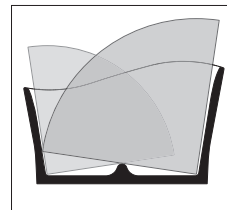
We aimed for an easy to use paper filter holder

The slope at the bottom makes it easy to take out the paper filter. Small contact surface between the paper filter and the stand keeps it sanitary. 100 sheets of paper filters can be stored in this holder.



VPS-100W

C/T24 723924
W165 • D68 • H100



Very little surface contact keeps it clean.



The body is sloped on the bottom, making it easy to take out individual filters.

Ceramic cup and saucer in tune with the shape of the V60 dripper



CCS-1W

C/T24 040663
Cup : W117 • D 95 • H 65
top opening diameter 95
Saucer : φ 140
Cup : full capacity 200ml



CCS-5012W

C/T12 040670
CCS-1W × 2

Coffee Mill

Important preparations before brewing coffee

All manual coffee grinders use mills made of ceramic. Ceramic mills keep the temperature down when grinding and can be easily rinsed with no potential rusting. Coffee mill size, material and variations are all important items for deliciously brewed coffee.



MSS-1DTB

C/T24 707726
W150 · D72 · H220
top opening diameter 70
coffee grounds 24g
2cups
washable grinder



MCD-2

C/T12 707337
W143 · D88 · H208
coffee grounds 35g



CM-502C

C/T12 707467
W152 · D104 · H231
coffee grounds 40g



MSCS-2DTB

C/T12 707733
W172 · D93 · H231
top opening diameter 90
coffee grounds 100g
washable grinder
burr-stabilizer plate



MMCS-2B

C/T12 707740
W167 · D95 · H195
top opening diameter 88
coffee grounds 100g
washable grinder
die-cast aluminum handle



Control knob display shows " coarse" and " fine . "



new

MOC-3-TB

C/T24 708020
W157 · D70 · H213
top opening diameter 63
coffee grounds 36g
3cups
washable burr

A compact coffee mill convenient for carrying



The handle is inserted into the band when not in use.

An aluminum alloy coffee mill with a weight that feels good in your hands.



MSG-2-T
C/T24 707894
W150 · D53 · H190
top opening diameter 46
coffee grounds 24g
2 cups
washable grinder



MSG-2-TB
707887



MCS-1
C/T12 707344
W148 · D98 · H210
top opening diameter 81
coffee grounds 10g



MM-2
C/T24 707504
W160 · D100 · H185
top opening diameter 79
coffee grounds 24g



CMHN-4
C/T20 707320
W208 · D105 · H215
top opening diameter 79
coffee grounds 120g
The glass is not heatproof glass.



MXR-2TB
C/T12 707627
W183 · D75 · H175
coffee grounds 40g
washable burr



MSA-2-SV
C/T12 707863
W145 · D52 · H200
top opening diameter 44
coffee grounds 24g
washable burr



MSA-2-B
707870



The hopper and the grounds receiver are removable vertically.

Ceramic and olive wood coffee mill

This coffee mill features a combination ceramic hopper and olive wood container, highlighting a balance between nature and design.



MCW-2-OV

C/T12 707375
W 167 • D 85 • H 215
coffee grounds 30g
washable burr



Choose the fineness of coffee grounds you like by turning the control knobs.



The slim middle makes it easy to grip while grinding the coffee.



Stainless steel conical burr



Allows users to adjust grind settings

The particle size of coffee grounds determines the flavor of a cup of coffee.

Particle size can be adjusted settings according to your taste, from medium fine to coarse grind, the best for hand dripping.

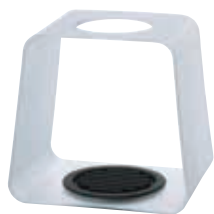
EVCG:44 grind settings



V60 Electric Coffee Grinder
EVCG-8B

C/T2
W 133 · D 220 · H 390
coffee grounds 240g

A coffee drip stand for pour over



DSC-1T

C/T12 021297
W 170 · D 134 · H 160



DSC-1TB

021303



VSS-1T

C/T12 021228
W 132 · D 140 · H 180

iF DESIGN AWARDS 2013

The V60 drip scale can be set together and used.



VAS-1

C/T12 021235
W 195 · D 140 · H 215



VAS-8006-G

C/T6 021327
W 190 · D 155 · H 250
includes 40 sheets of VCF-02M



VAS-8006-HSV

C/T6 021242
W 190 · D 155 · H 250
includes 40 sheets of VCF-02M

Olive Wood Series



VSS-1-OV

C/T6 021204
W 145 • D 160 • H 230



VSS-1206-OV

C/T6 021259
W 156 • D 160 • H 248
includes 100 sheets of VCF-02M



Coffee Stand

This drip stand allows you to adjust its height according to the server size.



VPOS-1506-SV

C/T6 142701
W 150 • D 150 • H 262
includes 100 sheets of VCF-02W



Suitable for 01 – 03 size of coffee server and dripper.



The V60 drip scale can be set together and used.

Press Coffee

Because coffee presses extract coffee oils, a main flavor ingredient in coffee, you can enjoy the individuality of the coffee beans. Black has joined the line.



For hot drink



CPSS-2-TB

C/T24 153608
W113 · D78 · H172
top opening diameter 74
practical capacity 240ml
1-2cups



CPSS-2-R

153615



THJ-2-SV

C/T12 105713
W110 · D87 · H166
top opening diameter 73
practical capacity 300ml
2cups



THJ-4-SV

C/T12 105720
W139 · D113 · H183
top opening diameter 90
practical capacity 600ml
4cups



new

THN-2-B

C/T12 105782
W114 · D76 · H167
top opening diameter 73
practical capacity 300ml
2cups



new

THN-4-B

C/T12 105799
W134 · D94 · H183
top opening diameter 90
practical capacity 600ml
4cups



THW-2-OV

C/T24 153974
W116 · D76 · H160
top opening diameter 73
practical capacity 300ml
2cups



THW-4-OV

C/T24 153981
W144 · D94 · H174
top opening diameter 90
practical capacity 600ml
4cups



For hot drink



THT-2MSV

C/T12 105645
W 115 · D 76 · H 166
top opening diameter 73
practical capacity 300ml
2cups



THT-4MSV

C/T12 105652
W 135 · D 92 · H 183
top opening diameter 90
practical capacity 600ml
4cups



THA-2SV

C/T12 102514
W135 · D80 · H185
top opening diameter 73
practical capacity 300ml
2cups



THA-4SV

C/T12 104518
W155 · D 95 · H 205
top opening diameter 90
practical capacity 600ml
4cups



CPSW-2-OV

C/T12 153714
W 114 · D 80 · H 170
top opening diameter 73
practical capacity 300ml
2cups



CPSW-4-OV

C/T12 153721
W133 · D95 · H186
top opening diameter 90
practical capacity 600ml
4cups



DGC-40-OV

C/T12 221901
φ 128 · H 224
top opening diameter 99
practical capacity 400ml
3cups



THE-2SVG

C/T6 105096
W120 · D78 · H192
top opening diameter 73
practical capacity 300ml
2cups

* Since the wooden parts of the DGC series are made by hand, the actual shape, color, size, and capacity may be slightly different from those in the photos.



With this device alone, a single cup of delicious coffee can be prepared

With only coffee grounds and hot water, you can brew one cup of delicious coffee. The carefully-designed mesh filter that ensures great taste comes in black, making stains hardly noticeable even if used repeatedly.



For hot drink



new
OCM-1-B

C/T24 140936
W118 • D93 • H93
top opening diameter 80
practical capacity 170ml

Authentic aroma without paper filters

Introducing a specialized stainless mesh that can extracts coffee oil which is one of the components of coffee's great flavor. This enables you to enjoy the true aroma unique to coffee.



Dripper structure



Compact storage



Graduated measuring scale inside.



CFOD-1B

C/T24 171404
W 115•D 110•H 82
(includes the attachment)
1 cup



For hot drink



CFO-1B

C/T24 171077
W118 • D96 • H148
top opening diameter 82
practical capacity 200ml
1 cup



CFOD-02-B

C/T24 171473
W121 • D135 • H105
1-4cups



CFOD-02-R

171626



For hot drink



CFO-2B

C/T24 171008
W150 • D105 • H171
top opening diameter 96
practical capacity 300ml
2cups



Put in the coffee grounds.



Start pour over.



Close the lid and directly pour.



A dripper made entirely of stainless steel with a double mesh filter

In the dripper, two finely etched mesh filters overlap. Appreciate the translucent liquid as if prepared with a paper filter, along with a rich flavor and a touch of the coffee's natural oils unique only to this metal filter.



Scale marks are shown for coffee grounds as a guide.



The precision double mesh filter does not allow the finer coffee powder to pass through.



Coffee oil is extracted.



new

DMD-01-HSV

C/T48 727960 W132 ·
D109 · H81
top opening diameter 94
1-2cups



new

DMD-02-HSV

C/T48 727977
W148 · D123 · H96
top opening diameter 108
1-4cups



Immersion dripper

This dripper extracts coffee after immersing ground coffee in hot water. It starts dripping after the switch is pressed, allowing anyone to extract coffee evenly.



Put ground coffee into the paper and pour in hot water.



After immersing coffee for a while, press the switch for a while, start dripping.



Coffee is dripped to the end even if you release your finger.



Hideki Togi, gagaku musician

As a musical performer from the Togi family, a family of musicians who for generations since the Nara era (710-794) has performed gagaku, ancient Japanese court music, he is active in multiple areas, engaged in music for movies, stage, and commercials, as well as being an actor.

Hideki Togi, musician and instrumental player of gagaku, which has 1,400 years of history as part of Japan's traditional culture, will talk about HARIO in 2019.



For hot drink



new
SSD-200-B

C/T12 728165
W118 · D115 · H133
top opening diameter 115
finished capacity 200ml
includes 40 sheets of VCF-02W



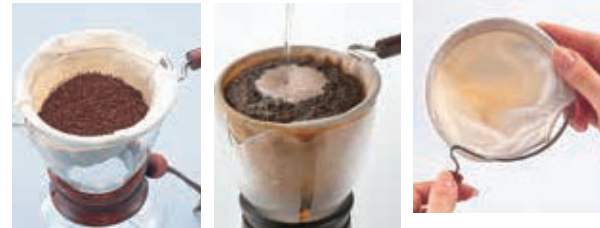
new
SSD-5012-B

C/T12 728172
W130 · D115 · H215
Dripper:finished capacity 200ml
Server:practical capacity 300ml
includes 40 sheets of VCF-02W



Cloth Drip

Due to the slow extraction of coffee through the fine and delicate cotton flannel, it never compromises on the acidity, bitterness, and flavor from the bean's original characteristics. Furthermore, you will be able to feel the coffee's rich taste from the coffee oils, which is an advantage to this method.



Medium grind coffee grounds

Let the coffee grounds expand.

Cloth filter : Cotton flannel

● After using the filter cloth, please rinse thoroughly. Place the filter in a container with clean water and store it inside the refrigerator.

※ This is to prevent oxidation of the oil of the remaining coffee grounds on the cloth filter.
 ※ The cloth filter can be replaced.



For hot drink



DPW-1

C/T12 331723
 φ 95 · H 168
 top opening diameter 93
 practical capacity 240ml
 1-2cups



DPW-3

C/T12 331730
 φ 110 · H 195
 top opening diameter 101
 practical capacity 480ml
 3-4cups

Olive Wood Series



For hot drink



DPW-1-OV

C/T12 131811
 φ 95 · H 168
 top opening diameter 93
 practical capacity 240ml
 1-2cups



DPW-3-OV

C/T12 131828
 φ 110 · H 195
 top opening diameter 101
 practical capacity 480ml
 3-4cups

A coffee syphon with outstanding presentation

While enjoying a rich aroma, you can also visually enjoy the coffee moving up and down through the glass bowl. If the extraction times are the same, there is little difference in flavor, making this apparatus a favorite amongst professionals.



MCA-3

C/T10 525016
W165 · D115 · H290
top opening diameter 72 (upper)
practical capacity 360ml
3cups



TCA-2

C/T12 503014
W160 · D95 · H340
top opening diameter 87 (upper)
practical capacity 240ml
2cups



TCA-3

C/T12 503113
W160 · D95 · H350
top opening diameter 87 (upper)
practical capacity 360ml
3cups



TCA-5

C/T12 503212
W160 · D110 · H360
top opening diameter 101 (upper)
practical capacity 600ml
5cups



DA-1SV

C/T12 511002
W138 · D88 · H188
top opening diameter 67 (upper)
practical capacity 120ml
1cup



A coffee siphon with an innovative concept

The Coffee Syphon Next and the Coffee Syphon Hario Sommelier both come with the stainless metal and cloth filter assemblies. The Coffee Syphon Hario Sommelier is different from past syphons, as it is designed in the image of a wine decanter, so that you can enjoy the aroma of the coffee.



※The handle is made of rubber and gives you a firm grip.

NXA-5

C/T12 502918
W115 • D180 • H390
top opening diameter 109 (upper)
practical capacity 600ml
5cups

* Comes with a metal filter and a cloth filter.



SCA-5

C/T4 502901
W150 • D186 • H355
top opening diameter 130 (upper)
practical capacity 600ml
5cups

* Comes with a metal filter and a cloth filter.



RCR-50

C/T6 536302
W264 • D139 • H190
top opening diameter 100
raw beans 50 g

Filter-in Coffee Bottle

Cold Brewed Coffee



Wine bottle shaped cold brew coffee bottle

Just by adding coffee grounds and water, you can make iced coffee. Put coffee grounds in the strainer, and place the lid. Set the spout and pour small amounts of water inside. Once the water is poured, put the stopper and gently shake the bottle to start the extraction. Refrigerate for approximately 8 hours for the cold-brew to complete.



For hot drink



FIC-70-MC

C/T24 033436
W87 • D84 • H300
top opening diameter 71
finished capacity 650ml
5 cups only



FIC-70-CBR

033443



The strainer can be removed. The upper parts are designed to put a lid on the bottom strainer.



Align the strainer with the spout.



Pour directly.



Cold Brew Coffee

Cold brew coffee jug and pitcher

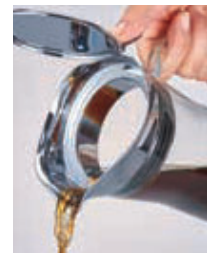
Just by adding coffee grounds and water, you can make iced coffee. Place coffee grounds in the strainer, and set the lid and spout. Slowly pour water into the carafe until full and refrigerate for approximately 8 hours for the cold brew to complete.



Pour coffee while the strainer is attached.
(CBS-10)



Attach the strainer to the spout.
(CBC-10)



Pour the coffee after removing the strainer.
(CBC-10)



For hot drink



CBS-10HSV

C/T24 036871
W 100 • D 94 • H 290
top opening diameter 88
finished capacity 1,000ml
8 cups only



For hot drink



CBC-10SV

C/T12 165021
W 152 • D 103 • H 310
top opening diameter 88
finished capacity 1,000ml
8 cups only

This drip-style cold brewed coffee device does not require speed adjustment

When water is put into the upper bowl, it flows and drips from the two slits of the dripper. The water drips completely in 1 hours without speed adjustment, enabling the casual enjoyment of authentic cold brewed coffee.



For hot drink



The dripping structure does not require adjustment.



A beaker-shaped pot.



SBS-5B

C/T12 163263
 φ 116 · H 360
 top opening diameter 73
 practical capacity 600ml
 5cups

Every drop creates the finest coffee

The slow dripping thoroughly extracts the flavor of the coffee, with a design that easily compliments a modern interior. The coffee 's strength can be changed by adjusting the faucet.



For hot drink



WDC-6

C/T6 163201
 W150 · D129 · H455
 top opening diameter 77
 finished capacity 780ml
 2-6cups



Moisten the coffee grounds before extracting.



Use the faucet to adjust dripping rate.



WDW-6

C/T6 163225
 W205 · D135 · H475
 top opening diameter 77
 finished capacity 780ml
 2-6cups



For hot drink



PTN-5BZ

C/T6 163379
 W190 · D170 · H290
 top opening diameter 82
 practical capacity 600ml
 5cups



Place coffee grounds.



The faucet makes it easy to use.





" FURIKO, " an entirely new cold brewed coffee device

"FURIKO, an entirely new cold brewed coffee device overturning the conventional idea of a water dripper, features short-time extraction. The track of the pendulum optimized for the V60 dripper shape makes it possible to complete extraction in 30 minutes.



For hot drink



WDF-6

C/T1 163386
W 205 · D 205 · H 985
top opening diameter 77
finished capacity 780ml
2-6cups



Special coffee starts with the first drip

The water drips for 5 hours, extracting 2000ml of coffee into two flasks. The dripping rate during extraction can be adjusted using the faucet located on both sides.



For hot drink



WDW-20

C/T1 163232
W290 · D230 · H980
top opening diameter 105 (upper bowl)
finished capacity 2,000ml
20cups

Stainless steel mug with dual layer thermal vacuum insulation

Adopting a lid with a drink spout, you can enjoy your freshly dripped coffee without losing its heat.



VUW-35HSV

C/T24 222212
 φ 74 · H 156
 top opening diameter 70
 practical capacity 350ml

VUW-35B

222229



Sectional view : dual layer vacuum thermal insulating structure.

By taking off the lid, you can directly hand drip coffee into it.

Lid with a drink spout

The liquid does not spill out even if it is tilted, allowing you to carry it with you

V60 Soto Mug with vacuum insulating double wall enables you to carry freshly-brewed hot coffee, since you can remove its lid and place a dripper there. You can also carry iced coffee keeping it cold.



Lid with a drink spout



VSW-35HSV

C/T24 222311
 W 79 · D 69 · H 177
 top opening diameter 55
 practical capacity 350ml

VSW-35B

222328





This double wall, stainless steel coffee server maintains the temperature of the coffee

A vacuum insulating double wall, stainless steel coffee server is introduced to allow for greater enjoyment of delicious coffee for longer. It is designed to fit the V60 dripper for the tastiest coffee.



VHS-60W
C/T12 220560
W 161 · D 127 · H 142 top
opening diameter 80
capacity to set lid 550ml
2-4cups



VHS-60R
220577



VHS-60B
220584



For hot drink



VHS-80B
C/T12 220591
W 164 · D 132 · H 162
top opening diameter 80
capacity to set lid 750ml
2-6cups

SGS-80
C/T 6 × 8 240834
φ 60 · H 70
top opening diameter 60
full capacity 80ml

SGS-140
C/T 6 × 8 240841
φ 69 · H 90
top opening diameter 69
full capacity 140ml

Coffee

Coffee Measuring Spoon



M-12SV

C/T48 716223
W 96 • D 53 • H 35
full capacity 12g



M-12-MB

C/T48 716247
W 96 • D 53 • H 35



M-12CP

C/T48 716230



M-12C

C/T48 716674
W 85 • D 55 • H 40
full capacity 12g



M-12WD

C/T48 716667
W 100 • D 57 • H 40
full capacity 12g



Canister



MCN-200R

C/T24 413672
φ 99 • H 142
top opening diameter 96
coffee grounds 200 g
full capacity 800ml



MCN-200B

413627



MCN-300R

C/T24 413689
φ 99 • H 189
top opening diameter 96
coffee grounds 300 g
full capacity 1,000ml



MCN-300B

413634



new

MCNT-S-B

C/T24 413849
W 120 • D 87 • H 110
top opening diameter 85
coffee grounds 130 g
full capacity 480ml



new

MCNT-M-B

C/T24 413856
W 130 • D 87 • H 150
top opening diameter 85
coffee grounds 190 g
full capacity 670ml



Just shake it, and make foamed milk

A manual shaker milk frother. Fill the cup to the measurement mark with cold milk. Set up the filter and the upper and lower cups and shake well for about 20-30 seconds. This will make smooth, foamed milk for cappuccinos and lattes. By transferring the foam milk inside a microwave safe container and heating it up, you can enjoy it with hot drinks as well.



LS-70-OW

C/T24 402768
 φ 72 · H 173
 top opening diameter 68
 practical capacity - milk 70ml

(This can make foamed milk for 2 cups of cappuccino.)



LS-70-PC

402799



Pour cold milk up to the measurement marking.



Shake well for about 20-30 seconds.



Top off your favorite drink.



CZ-1BR

C/T24 402966
 φ 75 · H 221

Fluffed up milk in a blink of an eye

Microwave milk until it is 40-60°C. Use the following guidelines-500W approximately 50-60 seconds, 600W approximately 40-50 seconds. Tilt slightly and press the button, foaming the milk for 30-40 seconds. This will make smooth foamed milk for cappuccinos and lattes.



Milk measurement marking visible from the inside.



The lid can be used as an equipment holder.



Can be poured directly into a cup.



For microwave



CQT-45BR

C/T24 402959
 W 145 · D 105 · H 205
 top opening diameter 81
 practical capacity - milk 100ml
 (This can make foamed milk for 3 cups of cappuccino.)

Tea



Filter-in Bottle - Portable -



A portable filter-in bottle has just been released

The lip and body are made of PCT resin, a safe material that is BPA-free, transparent, heat-resistant and strong against impact. As a filter is attached, your favorite cold brewed tea or fruit tea can be carried with you.



Carry around your favorite drink, cold brewed tea, or flavored water.



Since a filter is attached, the bottle can be used as a maccha (powdered green tea) shaker as well.



A filter mesh is set inside the lip.



new FIBP-40-SPR

C/T24 037830
φ74 · H240
top opening diameter 65
practical capacity 400ml



new FIBP-40-SG

037847

Filter-in Bottle



Wine bottle shaped cold brew tea bottle

Created from the idea to enjoy cold brewed tea like wine during meals, we designed the wine bottle shaped filter-in bottle. The filter is fixed onto the spout, so you can pour directly.

In addition to a 750ml bottle, a 300ml bottle is now available for individual use.



Just pour tea leaves and water together inside the bottle.

The filter mesh is fixed directly to the inside of the spout, so you can pour directly.



For hot drink



FIB-30-OG

C/T24 034334
W70 • D68 • H206
top opening diameter 57
practical capacity 300ml



FIB-30-R

034327



For hot drink



FIB-75-OG

C/T24 034426
W87 • D84 • H300
top opening diameter 71
practical capacity 750ml
iF DESIGN AWARDS
2014 IDEA 2014



FIB-75-R

034419
iF DESIGN AWARDS 2014
IDEA 2014



Filter-in Bottle - Aisne -

A champagne-shaped bottle for cold brewed tea

A new shape is released for the filter-in bottle to make cold brewed tea. The conventional filter-in bottle was shaped with the image of Bordeaux-type bottle, while the new model takes the shape of a champagne bottle. It is named Aisne, after the river Aisne running through the Champagne region. The net volume is 800ml.



Just pour tea leaves and water together inside the bottle.

The filter mesh is fixed directly to the inside of the spout, so you can pour directly.



For hot drink



FIE-80-PGR

C/T18 037564
φ90 • H320
top opening diameter 80
practical capacity 800ml



FIE-80-SPR

037540



FIE-80-SG

037557



A newly released square bottle stores tea in a horizontal position

This is a square bottle made of PCT resin. A filter inside the spout enables you to make cold brewed tea in the bottle. Due to its large 1,200 ml capacity, you can prepare plenty of cold brewed tea or flavored water for storage.

The filter mesh is fixed directly to the inside of the spout, so you can pour directly.

The tea can be stored in a horizontal position in a refrigerator shelf.

The bottle can be placed in the door pocket of a refrigerator.



KAB-120-W

C/T24 037571
W 90 · D 90 · H 320
top opening diameter 85
practical capacity 1,200ml



KAB-120-SPR

037595



KAB-120-SG

037588

Fully enjoy the taste of green tea Green tea mill, " Chaco "

With this ceramic mortar, grind green tea leaves like a stone mortar, and prepare smooth tea powder. The " tea powder shaker mesh " is convenient for removing any remaining coarse leaves after milling and for sprinkling powder onto dishes.



The " tea powder shaker mesh " is part of the kit.



Sprinkle tea powder evenly.



Use tea powder also in cooking



OMC-1-SG

C/T24 708006
W137 · D64 · H170
Capacity of the powder jar: 10 grams of tea leaves



For hot drink



HU-1

C/T5 × 12 836440
φ 86 · H63
top opening diameter 86
full capacity 170ml



HU-0830

C/T30 836464
HU-1 × 2





Heatproof glass kyusu (teapot) allows you to enjoy Japanese tea in style

To make delicious green tea, the large strainer, matching the shape of the glass, fully extracts the delicious taste of the leaves. For easy pouring, the form enables users to pour the last drop of tea smoothly. With this heatproof glass kyusu, you can enjoy Japanese tea in greater style.



The tapered spout makes it easy to pour tea.



The form enables users to pour the last drop of tea smoothly.



For hot drink



For microwave



new
CHZ-30T

C/T24 094413
W156 · D110 · H90
top opening diameter 110
practical capacity 300ml



new
CHZ-45T

C/T24 094420
W168 · D120 · H100
top opening diameter 120
practical capacity 450ml



new
HFG-300-C

C/T24 098435
φ84 · H170
top opening diameter 65
full capacity 300ml



new
HFG-370-R

C/T24 098442
φ85 · H170
top opening diameter 65
full capacity 370ml



Tea Scale

A "tea scale" for tea

The proper proportion of tea leaves and hot water, which is the key to delicious tea, is programmed into this tea scale. A green tea mode or black tea mode can be selected. In the green tea mode, where 4 grams of tea leaves and 150 ml of water are set for one cup, the scale indicates the amount of water suitable for the weight of tea leaves placed. In the black tea mode, the program is set for 3 grams of tea leaves and 150 ml of water per cup. You can also use it as a regular scale.



One cup of green tea is programmed as 4 grams of tea leaves. One cup of black tea is programmed as 3 grams of tea leaves.



Amount of water per cup: 150 ml is displayed.



The scale can be hooked when not in use.



new
TST-1-OW

C/T30 021730
W190 · D120 · H37
unit of display : 1–1,999g



new
TST-1-SG

021747



For microwave



JTS-35-OW

C/T24 044630
W124 · D98 · H120
top opening diameter 70
practical capacity 350ml
microwave safe including lid



On the underside of the lid, a removable tea strainer is attached.



JTS-35-OG
044623



JTS-35-R
044616

You can make a single serving equally as delicious

You can make a single serving of tea easily. In addition to Japanese green tea, black tea and herbal tea can be brewed as well.



For hot drink



HDT-M-OG

C/T24 140752
W120 · D103 · H105
top opening diameter 83
practical capacity 200ml



HDT-M-R

140745



For hot drink



OTM-1NW

C/T24 340107
W139 · D103 · H104
top opening diameter 87
practical capacity 200ml



OTM-1B

340114



By flipping the lid, it becomes a tray for the tea strainer after use.



A pot for tea bag, " Tea Hat "

You can lift a tea bag after brewing to the upper part of the hat-shaped lid and fix it easily, allowing you to casually enjoy tea brewed from a tea bag.



You can lift the tea bag to the upper side of the lid whenever you want.



The thread of the tea bag is easily caught by the slit and fixed.



Three colors are available to complement the color of the tea.



For microwave



TTH-30-OW

C/T24 140820
W96 · D127 · H131
top opening diameter 85
practical capacity 300ml



TTH-30-OG

140844



TTH-30-R

140837



Pour tea simply by tilting the pitcher. The lid structure does not let the aroma escape

This filter-in pitcher can be used as a pitcher for cold brewed tea. You can also make flavored infused water and sangria. The tea decanter is a pot for hot tea. Since it is shaped like a wine decanter, savor the tea as a complement to a meal. For both types, the filter is set in the spout, producing a lid that enables you to pour tea just by tilting the pitcher or decanter.



Just place tea leaves with hot or cold water in the pitcher or decanter. Since the filter is set inside the spout, you can pour tea just by tilting the vessel.



For hot drink



FIP-90-B

C/T24 037250
W 91 • D 80 • H 265
top opening diameter 80
practical capacity 900ml



For hot drink



TDC-50-PGR

C/T12 171558
φ 135 • H 165
top opening diameter 90
practical capacity 500ml



TDC-50-B

171541

A tea dripper that gives you precise control over extraction time

In addition to the round dripper for black tea, a new shape is released for enjoying Japanese green tea in a modern way. After brewing tea leaves in the tea dripper, press the switch, and green tea pours down to the server all at once. Choose a model according to your image and leaves you brew.



Vocalist, violinist : Sarah Alainn



For hot drink



TDR-35B

C/T12 022331
W123 · D114 · H120
top opening diameter 110
practical capacity 350ml



TDR-5012B

C/T12 022348
W150 · D116 · H205
practical capacity of dripper 350ml
practical capacity of pitcher 450ml



For hot drink



TDR-80B

C/T12 022300
φ 130 · H165
top opening diameter 100
practical capacity 800ml



TDR-806T

C/T6 022317
W170 · D134 · H309
practical capacity of dripper 800ml
practical capacity of pitcher 800ml



Push the switch to extract.



The Tea Dripper Largo Stand Set includes an ice tea pitcher with a spout formed to prevent ice from falling out.

Jumping Leaf Pot



This teapot was developed with the thought of tea leaves jumping

It is round, the shape that allows the most movement for the tea leaves to jump. Since the lid and filter come together, tea is poured with the lid on. This is a simple and functional teapot.



For hot drink



JPS-60-HSV

C/T24 410954
W 162 · D 122 · H 140
top opening diameter 82
practical capacity 600ml



Its round shape easily allows leaves to jump.



Just put tea leaves and hot water in the pot, and you can pour tea with the lid on.



For hot drink



QSM-1

C/T24 396920
W 150 · D 90 · H 95
top opening diameter 60
practical capacity 180ml
Comes with a spiral shaped strainer.



QSA-1SV

C/T24 396913
W 120 · D 80 · H 155
top opening diameter 59
practical capacity 220ml
Comes with a spiral shaped strainer.

Tea Pitcher



Tea pitcher with a friendly feel

A tea pitcher made of heatproof glass, stainless steel and natural wood, that can be used with a casual and friendly feel.



For hot drink



TPC-45HSV

C/T24 093928
W 140 · D 105 · H 123
top opening diameter 67
practical capacity 450ml



TPC-70HSV

C/T24 093935
W 156 · D 120 · H 148
top opening diameter 82
practical capacity 700ml



The stainless steel strainer is built with a stopper that secures inside the glass. Due to the etched mesh design, the tea leaf is less likely to leak, while also allowing for easy cleaning.



The tea strainer can be secured by running the hooked portion through the spout, pushing on the spring, and connecting the hook to the spout.



The keyword for flavor is jumping

The secret to serving flavorful tea is to make the tea leaves jump. The round form of the Jumping Tea Pot allows the tea leaves to move and jump. The tea strainer located at the spout, which gives maximum space for the tea leaves to move.



For hot drink



TDG-2

C/T12 412163
W215 · D120 · H125
top opening diameter 68
practical capacity 500ml



TDG-4

C/T12 412170
W235 · D137 · H130
top opening diameter 79
practical capacity 800ml



Tea strainer made from glass.



Round form that allows tea leaves to jump.



For hot drink



JP-2

C/T12 710610
W195 · D120 · H125
top opening diameter 68
practical capacity 500ml
microwave safe when strainer is removed



JP-4

C/T12 710627
W225 · D137 · H130
top opening diameter 79
practical capacity 800ml
microwave safe when strainer is removed



TWN-S

C/T24 412095
φ 125 · H80
top opening diameter 123
includes 1 candle



TW-M

C/T24 711655
φ 152 · H80
top opening diameter 152
includes 1 candle



As in the picture, set the tea strainer, then secure the hook to the spout.

* If the spout is damaged, repairs are possible.



An enamel tea kettle is released

HARIO has made the spout thick to allow hot water with lots of air in it to be poured, which is necessary for "tea leaf jumping," the key to brewing delicious tea. The ingenuity extends to the shape of the inner spout hole so that not too much hot water will come out at once.



Compatible with open flames and induction heating



BTK-80-W

C/T12 021518
W 270 • D 155 • H 135
top opening diameter 75
practical capacity 800ml



Induction heater (IH) and direct flame are available.



The thick spout for tea.



BCN-100-W

C/T12 413726
φ 102 • H 72
top opening diameter 102
full capacity 400ml
practical capacity : tea leaves • coffee grounds/ 100g(approx.)



BCN-200-W

C/T12 413733
φ 102 • H 143
top opening diameter 102
full capacity 800ml
practical capacity : tea leaves • coffee grounds/ 200g(approx.)



Pull-up strainer type Teor Wood

We gave it a natural look by making the wooden parts from olive wood. Pull the strainer up once tea has reached the desired strength like a tea bag. Therefore, you can get a second cup that is as good as the first.



Brew to your desired strength.

The strainer is removable.



For hot drink



TEO-45-OV

C/T24 154117
W150 · D116 · H138
top opening diameter 82
practical capacity 450ml



TEO-70-OV

C/T24 154124
W160 · D125 · H156
top opening diameter 82
practical capacity 700ml



For hot drink



CHAN-2SV

C/T12 161207
W158 · D103 · H141
top opening diameter 104
practical capacity 300ml
2cups



CHAN-4SV

C/T12 161214
W168 · D117 · H160
top opening diameter 104
practical capacity 600ml
4cups

Press type tea maker

This is a press type tea maker where you pour tea leaves and hot water into the press and press down on the filter. In addition to black teas, herbal teas can be brewed with ease as this tea maker allows for all tea options.



Press Style



For hot drink



CPSS-2-TB

C/T24 153608
W113 · D78 · H172
top opening diameter 74
practical capacity 240ml
1-2cups



CPSS-2-R

153615



THJ-2-HSV

C/T12 105713
W110 · D87 · H166
top opening diameter 73
practical capacity 300ml
2cups



THJ-4-HSV

C/T12 105720
W139 · D113 · H183
top opening diameter 90
practical capacity 600ml
4cups



new THN-2-B

C/T12 105782
W114 · D76 · H167
top opening diameter 73
practical capacity 300ml
2cups



new THN-4-B

C/T12 105799
W134 · D94 · H183
top opening diameter 90
practical capacity 600ml
4cups



THW-2-OV

C/T24 153974
W116 · D76 · H160
top opening diameter 73
practical capacity 300ml
2cups



THW-4-OV

C/T24 153981
W144 · D94 · H174
top opening diameter 90
practical capacity 600ml
4cups



For hot drink



THT-2MSV

C/T12 105645
W 115 · D 76 · H 166
top opening diameter 73
practical capacity 300ml
2cups



THT-4MSV

C/T12 105652
W 135 · D 92 · H 183
top opening diameter 90
practical capacity 600ml
4cups



CPSW-2-OV

C/T12 153714
W 114 · D 80 · H 170
top opening diameter 73
practical capacity 300ml
2cups



CPSW-4-OV

C/T12 153721
W133 · D95 · H186
top opening diameter 90
practical capacity 600ml
4cups



DGC-40-OV

C/T12 221901
φ 128 · H 224
top opening diameter 99
practical capacity 400ml
3cups



THA-2SV

C/T12 102514
W135 · D80 · H185
top opening diameter 73
practical capacity 300ml
2cups



THA-4SV

C/T12 104518
W155 · D 95 · H 205
top opening diameter 90
practical capacity 600ml
4cups



THE-2SVG

C/T6 105096
W120 · D78 · H192
top opening diameter 73
practical capacity 300ml
2cups

Drink



A cold sake decanter, glass wine ewer that keeps the drink cold without diluting

Because the sake cooler is made with a heatproof glass, the sake can be beautifully decorated on the table. With the ice holder separated, the sake will never get diluted.

※ If the spout is damaged, repairs are possible.



Setup the ice holder.



Push up on the knob.
※ IDC-4SV



For hot drink



IDX-2MSV

C/T12 928329
W162 · D130 · H147
top opening diameter 78
practical capacity 360ml



IDM-2ESV

C/T12 928206
W180 · D130 · H150
top opening diameter 78
practical capacity 360ml



IDS-2ESV

C/T12 928404
W180 · D130 · H165
top opening diameter 78
practical capacity 360ml



For hot drink



new

IDC-4SV

C/T6 512399
W190 · D150 · H420
top opening diameter 85
practical capacity 720ml



For microwave



TI-300T

C/T36 836402
φ70 · H164
top opening diameter 60
practical capacity 300ml



GT-2T

C/T30 915206
φ90 · H138
top opening diameter 72
practical capacity 400ml

A water pitcher with a new concept design and function

A water pitcher with a simple design using only silicone rubber and glass. The silicone rubber spout can be moved vertically to open and close. Made of heatproof glass, it is dishwasher safe.



For hot drink



WJ-7-OG

C/T24 036437

φ92 · H235 (When opened)
top opening diameter 81
practical capacity 700ml

WJ-7-R

036420



WJ-10-OG

C/T24 036468

φ92 · H320 (When opened)
top opening diameter 81
practical capacity 1,000ml

WJ-10-R

036451

A simple, easy to use, and handy pitcher

The handy pitcher that comes with a glass handle is useful for daily usage, and can be used in various scenarios. It can be used as a water pitcher, as well as a pitcher for juice and tea.



For hot drink



HDP-10PW

C/T24 034433

W123 · D82 · H265
top opening diameter 76
practical capacity 1,000ml

HDP-10PGR

034440



For hot drink



WPSJ-1HSV

C/T12 812468
 W 129 • D 88 • H 268
 top opening diameter 75
 practical capacity 1,000ml



WP-11B

C/T12 225039
 W150 • D120 • H310
 top opening diameter 44
 practical capacity 1,100ml



WP-1HSV

C/T12 221017
 W150 • D120 • H295
 top opening diameter 44
 practical capacity 1,000ml



For hot drink



HAC-1

C/T6 × 6 440241 φ60 · H60
top opening diameter 60
full capacity 100ml



For hot drink



HPG-300

C/T6 × 8 429215
φ65 · H128
top opening diameter 65
full capacity 300ml



HPG-420

C/T6 × 8 429222
φ75 · H145
top opening diameter 75
full capacity 420ml



For hot drink



HTR-330

C/T48 231542
φ83 · H95
top opening diameter 83
full capacity 330ml



HTR-430

C/T48 231559
φ83 · H125
top opening diameter 83
full capacity 430ml



For microwave



SG-120

C/T24 240810
φ55 · H70
top opening diameter 55
full capacity 120ml



RG-300

C/T24 240803
φ80 · H85
top opening diameter 80
full capacity 300ml



Shot Glass

Heatproof shot glasses for professional use

This is a simple heatproof shot glass designed for use with commercial espresso machines.



For hot drink



SGS-80

C/T6 × 8 240834
φ60 · H70
top opening diameter 60
full capacity 80ml



SGS-140

C/T6 × 8 240841
φ69 · H90
top opening diameter 69
full capacity 140ml



Heatproof Yunomi



For hot drink



HU-1

C/T5 × 12 836440
 φ86 · H63
 top opening diameter 86
 full capacity 170ml



HU-0830

C/T30 836464
 HU-1 × 2



For hot drink



VCG-10

C/T24 222014
 φ92 · H103
 top opening diameter 92
 full capacity 300ml



VCG-15

C/T18 222021
 φ100 · H133
 top opening diameter 100
 full capacity 450ml



For hot drink



TRG-260

C/T24 220317
 φ82 · H97
 top opening diameter 82
 full capacity 260 ml



TBG-380

C/T24 220300
 φ74 · H167
 top opening diameter 71
 full capacity 380 ml



For hot drink



GHK-180

C/T24 220386
 φ89 · H102
 top opening diameter 82
 practical capacity 180ml





For microwave



HKM-1T

C/T48 229709
W114 • D82 • H93
top opening diameter 75
full capacity 330ml



HUT-8T

C/T48 429444
W111 • D87 • H95
top opening diameter 87
full capacity 300ml



For microwave



HGT-1T

C/T48 429413
W97 • D76 • H107
top opening diameter 76
full capacity 240ml



HGT-2T

C/T48 429420
W102 • D77 • H117
top opening diameter 77
full capacity 280ml



HGT-3T

C/T48 429437
W88 • D55 • H130
top opening diameter 55
full capacity 260ml



For hot drink



HCGN-350SV

C/T24 221260
W118 • D88 • H95
top opening diameter 85
full capacity 365ml



For hot drink



HW-8SSV

C/T24 418332
W91 • D57 • H122
top opening diameter 55
full capacity 220ml



HW-8CSV

C/T24 418011
W93 • D57 • H122
top opening diameter 55
full capacity 220ml



For microwave



CSW-1T

C/T24 040601
Cup : W122 • D103 • H60
top opening diameter 108
Saucer : φ 140
full capacity 230ml



TCSN-1T

C/T24 040625
Cup : W115 • D93 • H55
top opening diameter 93
Saucer : φ 140
full capacity 230ml



CCS-1W

C/T24 040663
Cup : W117 • D 95 • H 65
top opening diameter 95
Saucer : φ 140
full capacity 200ml



CCS-5012W

C/T12 040670
CCS-1W×2



Tea



Mulled Wine

A heatproof snifter glass

Made of heatproof glass, this stemmed glassware is great for serving hot drinks and is microwave and dishwasher safe. It can be used for making hot wine in a microwave.



Microwave safe.
Use a microwave with 18cm interior height.



For microwave



new
HFG-300-C
C/T24 098435
φ 85 · H 170
top opening diameter 65
full capacity 300ml



new
HFG-370-R
C/T24 098442
φ 85 · H 170
top opening diameter 65
full capacity 370ml



Chawan-mushi
(Steamed egg custard)



“HARIO LWF LIVING ACCESSORY”

A “HARIO LWF LIVING ACCESSORY” is a handmade glass product created by the “HARIO Lampwork Factory,” a glass workshop in Nihombashi, Tokyo. It delivers tableware that glasswork artisans completed piece by piece with great care.



HARIO Lampwork Factory

“Sound” and “Light”

Along with delicate glass, a Bluetooth-compatible speaker with LED light on it decorates the room. Enjoy the glitter of glass works meticulously handmade one by one with your favorite music and soft light.



BTOH-1MT

C/T6 018860
W155 • D125 • H370



BTOH-1C

C/T6 018877
W200 • D96 • H255

“OTOHIKARI” allows you to casually enjoy “sound” and “light” at the same time from your smartphone – a speaker within an interior lamp made of delicate glass work.



Cook





A glass lid rice cooker in which you can see the flavor

By increasing the thickness of the glass lid rice cooker, we made fire adjustment unnecessary, which was said to be the difficult part of cooking rice over a direct flame. The whistle on the top of the lid will let you know when to stop the flame. Once it whistles, stop the heat and let it steam for 15 minutes. Using the steam heat stored in the glass lid rice cooker will draw out flavors from the rice. The lid is a heatproof glass. Being able to see the rice cook is exciting and also worry free. All parts are made in Japan. Use this glass lid rice cooker with a glass lid to enjoy the rice flavors from a direct flame, inherited from ancient times.



For open flames

Medium flame + steam for 15 minutes



GNN-150B

C/T6 803848
W210 • D174 • H190
top opening diameter 150
for 2 servings

High flame + steam for 15 minutes



GNN-200B

C/T4 803831
W270 • D230 • H210
top opening diameter 200
for 6 servings

Cross-sectional view



The thick bottom of the rice cooker will adjust the heat that is transferred to the rice.



This rice kettle's rice bowl retains the flavor

Since the bowl has water-absorbing properties, it appropriately absorbs excess moisture from the rice, making a flavorful rice where you can see each separate grain. When reheating in the microwave, the water that was absorbed in the bowl gets released, forming a soft rice.



For microwave



Do not expose to open flames



GO-2B

C/T12 803824
W190 • D190 • H87
for 4 servings

Microwave safe



An IH rice pan coated with a non-stick polymer keeps rice from sticking to the pan.

Four-layer Structure + Non-stick Coating

The four-layer stainless steel and aluminum pan conducts heat evenly to cook delicious rice. Since the inside is coated with a non-stick polymer, rice hardly sticks to the pan. The pan can be used for simmered dishes as well.



Compatible with open flames and induction heating

Low heat + let cooked rice sit for 15 minutes after turning off the heat



GIS-200

C/T4 803992
 W 260 • D 216 • H 200
 top opening diameter 208
 full capacity 2,800ml
 for 6 servings



This earthen pot, large in capacity, is easy to use

With the basic, modern potter's wheel look, it is good for cooking at the dining table. The lid is made of heatproof glass allowing ingredients to be seen. It is suitable for everyday use.



For open flames



For microwave



MNN-165-B

C/T12 803756
W 210 · D 188 · H 123
top opening diameter 165
full capacity 900ml



MNN-225-B

C/T6 803763
W 278 · D 250 · H 155
top opening diameter 225
full capacity 2,200ml



MNN-255-B

C/T4 803770
W 313 · D 280 · H 174
top opening diameter 255
full capacity 3,200ml

An IH stainless steel Yukihiro pan with beautiful hammer marks.

Various useful recipes are included as a guide. Because the lid is made of heat-resistant glass, you can see the inside while cooking and know when the dish is ready to eat.



Compatible with open flames and induction heating



MIS-23

C/T6 803978
φ 285 · H 144
top opening diameter 225
full capacity 1,900ml



MIS-26

C/T6 803985
φ 315 · H 156
top opening diameter 255
full capacity 2,600ml



HARIO Oven Range Ware

Easy to mix, a deep shaped mixing bowl

A deep design that makes the mixing process easier. The size capacity fits plenty, and with a smaller diameter, you can store compactly. Furthermore, the three sizes can be stored by fitting them inside each other.



The three sizes can be stored by fitting them inside each other.



A deep design that makes mixing process easier.



For microwave



For oven



MXP-900

C/T12 420335
 φ 156 · H102
 top opening diameter 156
 full capacity 900ml



MXP-1500

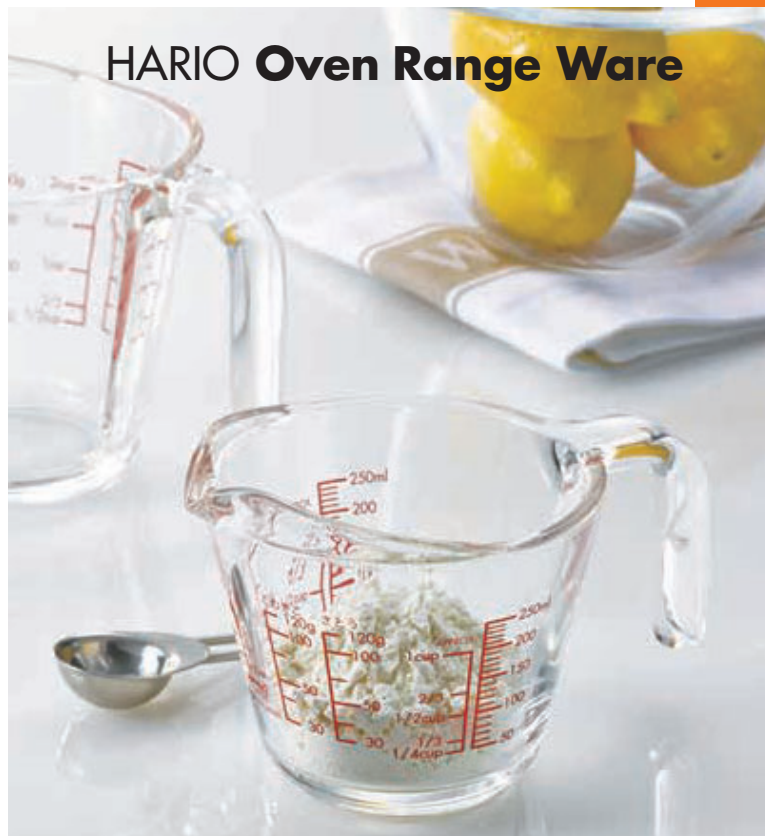
C/T12 420342
 φ 187 · H115
 top opening diameter 187
 full capacity 1,500ml



MXP-2200

C/T12 420359
 φ 210 · H120
 top opening diameter 210
 full capacity 2,200ml

HARIO Oven Range Ware



The feature is the measurements that can be seen from inside

Considering the line of sight when using a measuring cup, we placed markings that are clearly legible when viewed from the top. This has measurement markings not just for fluids, but for sugar and flour as well. Being heat resistant glass, these are safe when preparing hot water in a microwave.



For microwave

**CMJ-200**

C/T24 530300
W86 · D81 · H87
top opening diameter 81
practical capacity 200ml

**CMJ-500**

C/T24 530317
W99 · D91 · H145
top opening diameter 91
practical capacity 500ml

**CMJW-200**

C/T24 530331
W118 · D81 · H87
top opening diameter 81
practical capacity 200ml

**CMJW-500**

C/T24 530324
W150 · D105 · H120
top opening diameter 105
practical capacity 500ml



For microwave



For oven

**MJP-250**

C/T12 530379
W155 · D109 · E98
top opening diameter 109
practical capacity 250ml

**MJP-500**

C/T12 530386
W173 · D128 · H123
top opening diameter 128
practical capacity 500ml



Measurement markings that can be seen from the inside.



Open by lifting up on the lid.



Close by pushing down on the lid.



Difficult to spill even when tipped over.



For hot drink



MPS-100-OG

C/T36 813618
 φ 63 · H 97
 top opening diameter 37
 practical capacity 100ml



MPS-100-R

813601



MPS-150-OG

C/T36 813649
 φ 69 · H 109
 top opening diameter 37
 practical capacity 150ml



MPS-150-R

813632

Push to pour, a sealed soy sauce cruet

A sealed soy sauce cruet that stores soy sauce safely while maintaining flavor. Soy sauce is poured by simply pressing down on the upper surface of the lid, with the amount being controlled by how hard you push.

*This can be used for vinegar as well. Push the center of lid to pour.



Press the center of the lid to pour soy sauce.



For hot drink



OMPS-120-OG

C/T36 813670
 φ 68 · H 88
 top opening diameter 44
 practical capacity 120ml



OMPS-120-R

813663



OMPS-180-OG

C/T36 813694
 φ 74 · H 108
 top opening diameter 44
 practical capacity 180ml



OMPS-180-R

813687

Healthy cooking with oil spray

An oil spray that can be prepared meals without excess oil. It can spray small amounts of oil as a fine mist. It can create a healthy cooking oil with lower calories. Original recipe included.



Pump before using.



For hot drink



OS-60-TOG

C/T24 419520
 \varnothing 56 • H150
 top opening diameter 37
 practical capacity 60ml



OS-60-TCGR

419537



A BBQ oil spray packaged for outdoors



For hot drink



new

BOS-60-TOG

C/T24 419582
 \varnothing 56 • H150
 top opening diameter 37
 practical capacity 60ml





Transparent, deep spice mill with a lid

Since ground spices can be stored in the lid, you can see the quantity to be used. While cooking, spices are protected from moisture such as steam from cookware. The body is made of heatproof glass resistant to spread of color or odor. The mill is used for rock salt, whole pepper, dried garlic, and other spices.



As spices can be stored in the lid, they can be protected from moisture.



You can directly sprinkle your favorite spices whether pepper or dried garlic.



Spices can be stored in the lid.



For hot drink



new

SMS-120-B

C/T48 708037

φ 55 • H153

top opening diameter 37
practical capacity 120ml



Clog-resistant burr perfect for sesame

The shape of the burr is designed to resist clogging even for sesame that produces oil. Enjoy the taste of freshly ground, fragrant sesame.



Ground sesame can be stored in the lid.



For hot drink



new

SMS-120-PGR

C/T48 708044

φ 55 • H153

top opening diameter 37
practical capacity 120ml

One shake is 1/2 teaspoon A measuring spice jar

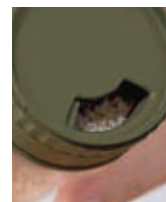
As one shake is equivalent to 1/2 teaspoon, it will prevent you from excess salt or sugar intake. The heatproof glass jar makes it easy to know what's inside, and can be useful for dry herbs, and for refills on granular seasonings, as well as salt and sugar. Colors and smells are difficult to transfer, and it is safe to wash using hot water, dishwasher, and dish dryer. You can always use it cleanly.



An opening that can pour directly.



A three-hole opening to pour salt.



A measured opening that pours 1/2 teaspoon.



The underside of the top cap can be used as well.

* In order to measure 1/2 teaspoon, close the lid opening, and flip upside down 180°. Return it back to its original state and turn the lid opening to the 1/2-teaspoon opening



For hot drink



NSS-M-OG

C/T36 811775

φ 59 • H118

top opening diameter 55
practical capacity (salt 100g)



NSS-M-R

811768

A dressing bottle that allows one-hand operation

Due to its excellent seal, you can prepare dressing just by putting ingredients into the bottle and shaking it. Made of heatproof glass, the bottle can be washed in hot water or dishwasher/dryer.



One-hand operation to open and close the spout.



Due to its excellent seal, you can shake the bottle to stir dressing.



The spout allows for controlled portioning.



Its slim shape makes for easy storage.



For hot drink



ODB-120-PGR

C/T24 532410
 φ 55 · H 152
 top opening diameter 37
 practical capacity 120ml



ODB-120-B

532403



ODB-240-PGR

C/T24 532434
 φ 55 · H 217
 top opening diameter 37
 practical capacity 240ml



ODB-240-B

532427



For hot drink



DBS-120G

C/T24 531222
 φ 55 · H135
 top opening diameter 37
 practical capacity 120ml



DBS-120B

531208



DBS-240G

C/T24 531239
 φ 55 · H203
 top opening diameter 37
 practical capacity 240ml



DBS-240B

531215

Use the cooking bottle for authentic cuisines at your home

A cooking bottle which comes with original recipes of Chef Akiko Nakayama, which can cook authentic cuisines at your home. By adding taste and richness, it gives a depth in flavor. Enjoy flavorful oils, ponzu vinegars, and sauces which become basic stocks and accented flavors for Japanese, Western and Chinese cuisines. Let's start cooking!



Chef Akiko Nakayama

Menu recipe development and styling.
General food coordinator. Sponsored by
Akiko Nakayama Cooking Classes.



Cooking Bottle



For hot drink



CKB-150-OG

C/T24 532014
φ 50 • H145
top opening diameter 31
practical capacity 150ml



CKB-150-R

532007



For hot drink



CKB-300-OG

C/T24 532045
W70 • D68 • H206
top opening diameter 57
practical capacity 300ml



CKB-300-R

532038



CKB-3012-R

C/T12 532069
practical capacity 150ml • 300ml





For hot drink



MCN-200R

C/T24 413672
 φ 99 • H142
 top opening diameter 96
 coffee powder 200 g
 full capacity 800ml



MCN-200B

413627



MCN-300R

C/T24 413689
 φ 99 • H189
 top opening diameter 96
 coffee powder 300 g
 full capacity 1,000ml



MCN-300B

413634



new

MCNT-S-B

C/T24 413849
 W 120 • D 87 • H 110
 top opening diameter 85
 coffee powder 130 g
 full capacity 480ml



new

MCNT-M-B

C/T24 413856
 W 130 • D 87 • H 150
 top opening diameter 85
 coffee powder 190 g
 full capacity 670ml



The skinny canister, a slim canister that fits your hand

It's clear design keeps a sense of cleanliness. It can be used to store anything from dried fruits to pickled vegetables.



For hot drink



SCN-200T

C/T24 413641
 \varnothing 75 • H85
 top opening diameter 70
 practical capacity 200ml



SCN-400T

C/T24 413658
 \varnothing 75 • H143
 top opening diameter 70
 practical capacity 400ml



SCN-700T

C/T24 413665
 \varnothing 75 • H 228
 top opening diameter 70
 practical capacity 700ml

* Long pastas may not fit in this item.



For hot drink



SFS-S

C/T24 010871
 \varnothing 67 • H 118
 top opening diameter 20
 practical capacity (salt 120g)



SFS-M

C/T24 010888
 \varnothing 80 • H 142
 top opening diameter 27
 practical capacity (salt 250g)



SFS-L

C/T24 010895
 \varnothing 91 • H 164
 top opening diameter 30
 practical capacity (salt 350g)



BCN-100-W

C/T12 413726
 \varnothing 102 • H 72
 top opening diameter 102
 full capacity 400ml
 practical capacity : tea leaves • coffee grounds/ 100g(approx.)



BCN-200-W

C/T12 413733
 \varnothing 102 • H 143
 top opening diameter 102
 full capacity 800ml
 practical capacity : tea leaves • coffee grounds/ 200g(approx.)



Can be stored inside one another.



Removable packing.



Microwave safe.

Rectangular storage containers made entirely of heatproof glass

The lid and body of these storage containers is made from heatproof glass. Due to its rectangular shape, space can be effectively utilized when storing. They can also be stacked on top of each other. The top surface has a clear appearance, and it is possible to view the inside of the container from the side. This product is microwave safe. Furthermore, by removing the lid, it can be used in the oven as well. The size differences make it possible to store each container inside each other making compact storage possible.



For microwave



For oven

HARIO Oven Range Ware



CWK-S-OG

C/T24 416826
W104 • D104 • H56
full capacity 250ml



CWK-S-R

416819



CWK-M-OG

C/T18 416857
W134 • D134 • H75
full capacity 600ml



CWK-M-R

416840



Overnight glass salting bowls easily display your favorite vegetables

Due to its clear and simple design, the glass overnight salting bowl enables you to see the colorful vegetables, which makes it look nice even on the dinner table. Because it has a lid, you can refrigerate it directly after salting. The bowl is made out of heatproof glass, and it prevents colors and smells to stain, and can be washed with hot water, dishwasher, and dish dryer. This product comes with Chef Akiko Nakayama's recipes.



For microwave



GTK-S-OW

C/T12 098077
W116 • D110 • H98
top opening diameter 105
full capacity 500ml



GTK-S-R

098060



Lay the weighted piece.



Use the lid for storage.



Microwave safe.



A handy juicer that can easily make fresh juices

A personal handy juicer. By raising or lowering the spiral shaft, the blade will rotate, grinding the fruit pulp and stirring it. It can produce one cup of fresh juice very easily, and the cup can be used directly to drink out of. You can easily enjoy your favorite fresh juices.



For hot drink



HDJ-L-OW

C/T24 401280
 φ88 · H 160
 top opening diameter 83
 practical capacity 300ml



HDJ-L-R

401297



Comes with 10 recipes including a perfect for breakfast acai bowl and a warm pumpkin soup.



Rotating spiral shaft.

HARIO Oven Range Ware

Square Container



CWK-S-OG
C/T24 416826
W104 • D104 • H56
full capacity 250ml



CWK-S-R
416819



CWK-M-OG
C/T18 416857
W134 • D134 • H75
full capacity 600ml



CWK-M-R
416840

Mixing Bowl



MXP-900
C/T12 420335
φ 156 • H102
top opening diameter 156
full capacity 900ml



MXP-1500
C/T12 420342
φ 187 • H115
top opening diameter 187
full capacity 1,500ml



MXP-2200
C/T12 420359
φ 210 • H120
top opening diameter 210
full capacity 2,200ml

Measure Cup



MJP-250
C/T12 530379
W155 • D109 • H98
top opening diameter 109
practical capacity 250ml



MJP-500
C/T12 530386
W173 • D128 • H123
top opening diameter 128
practical capacity 500ml

Shot Glass



SGS-80
C/T6 × 8 240834
φ 60 • H70
top opening diameter 60
full capacity 80ml



SGS-140
C/T6 × 8 240841 φ 69 • H90
top opening diameter 69
full capacity 140ml

Yunomi



HU-1
C/T5 × 12 836440
φ 86 • H63
top opening diameter 86
full capacity 170ml



HU-0830
C/T30 836464
HU-1 × 2



For microwave For oven



CAMPAIGN

MKK-2012-OW

C/T12 092198
W83 · D81 · H46
full capacity 110ml



CAMPAIGN

MKK-2012-R

092204



CAMPAIGN

KST-2012-OW

C/T12 092167
S:W111 · D107 · H47
M: W143 · D139 · H62
full capacity 250ml/600ml



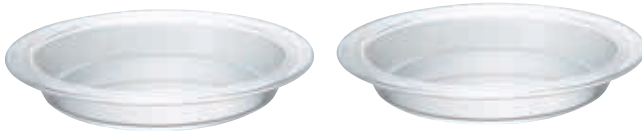
CAMPAIGN

KST-2012-R

092174



For microwave For oven



CAMPAIGN

HPZ-1812

C/T12 420045
φ 200 · H30
top opening diameter 164
full capacity 400ml



For microwave For oven



CAMPAIGN

MXP-2606

C/T6 420571
M: φ 187 · H115 top opening diameter 187
L : φ 210 · H120 top opening diameter 210
full capacity 1,500ml/2,200ml



For microwave For oven



CAMPAIGN

HSB-2812

C/T12 420052
φ 120 · H 55
top opening diameter 120
full capacity 300ml



For microwave For oven



CAMPAIGN

HU-3012

C/T12 836631
φ 86 · H 63
top opening diameter 86
full capacity 170ml

Olive Wood Series for Coffee

Dripper



For hot drink



VDG-01-0V

C/T24 724532
 φ 120 • H 77
 top opening diameter 97
 1-2cups



VDG-02-0V

C/T24 724549
 φ 120 • H 95
 top opening diameter 115
 1-4cups

Server



For hot drink



VCWN-40-0V

C/T24 019324
 W177 • D118 • H104
 top opening diameter 88
 practical capacity 400ml



VCWN-60-0V

C/T24 019331
 W182 • D128 • H121
 top opening diameter 88
 practical capacity 600ml

Coffee Mill



MCW-2-0V

C/T12 707375
 W 167 • D 85 • H 215
 coffee grounds 30g

A washable grinder

Nel Drip



For hot drink



DPW-1-0V

C/T12 131811
 φ 95 • H168
 top opening diameter 93
 practical capacity 240ml
 1-2cups



DPW-3-0V

C/T12 131828
 φ 110 • H195
 top opening diameter 101
 practical capacity 480ml
 3-4cups

Press Coffee



For hot drink



CPSW-2-0V

C/T12 153714
 W114 • D80 • H170
 top opening diameter 73
 practical capacity 300ml
 2cups



CPSW-4-0V

C/T12 153721
 W133 • D95 • H186
 top opening diameter 90
 practical capacity 600ml
 4cups



DGC-40-0V

C/T12 221901
 φ 128 • H224
 top opening diameter 99
 practical capacity 400ml
 3cups

Coffee Stand



VSS-1-OV
C/T6 021204
W145 • D160 • H230



VSS-1206-OV
C/T6 021259
W156 • D160 • H248
includes 100 sheets of VCF-02M



Olive Wood Series for Tea

Press Style



For hot drink



THW-2-OV
C/T24 153974
W116 • D76 • H160
top opening diameter 73
practical capacity 300ml
2 cups



THW-4-OV
C/T24 153981
W144 • D94 • H174
top opening diameter 90
practical capacity 600ml
4 cups

Pull Up Style



For hot drink



TEO-45-OV
C/T24 154117
W150 • D116 • H138
top opening diameter 82
practical capacity 450ml



TEO-70-OV
C/T24 154124
W160 • D125 • H156
top opening diameter 82
practical capacity 700ml

Olive Wood Series for Cook



For hot drink



SFS-S
C/T24 010871
φ 67 • H 118
top opening diameter 20
practical capacity (salt 120g)

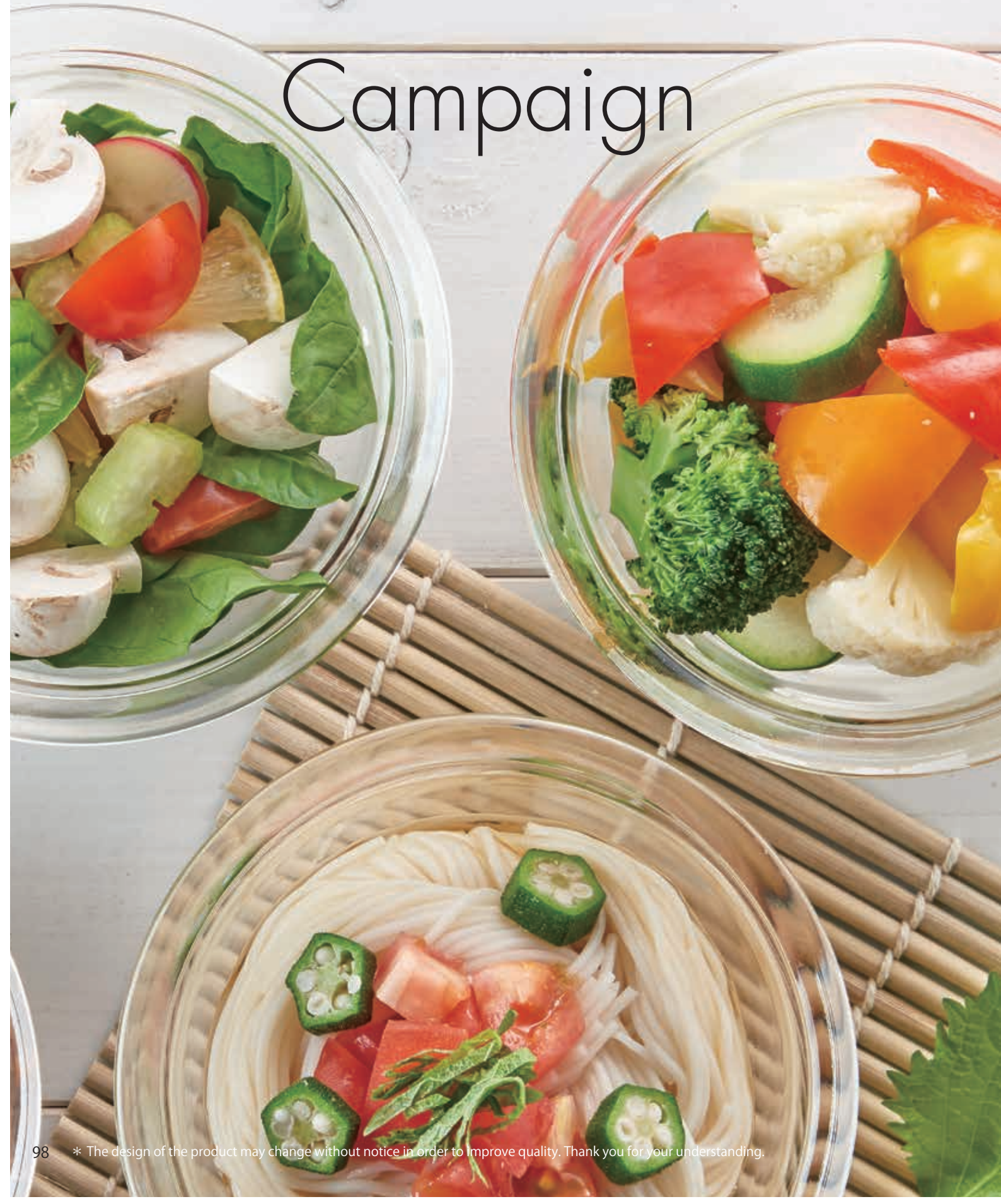


SFS-M
C/T24 010888
φ 80 • H 142
top opening diameter 27
practical capacity (salt 250g)



SFS-L
C/T24 010895
φ 91 • H 164
top opening diameter 30
practical capacity (salt 350g)

Campaign





We pursued ease of use

With a heatproof glass teapot, you can enjoy the variety of colors in the tea. It comes with a large tea strainer so that the tea leaves can expand easily. It has a round shaped knob on the lid that is easy to hold.



For hot drink



CAMPAIGN

CHJMN-30T

C/T24 093102
W143 · D98 · H98
top opening diameter 94
practical capacity 300ml



CAMPAIGN

CHJMN-45T

C/T24 093119
W155 · D118 · H95
top opening diameter 94
practical capacity 450ml



CAMPAIGN

CHJMN-70T

C/T24 093126
W173 · D132 · H108
top opening diameter 107
practical capacity 700ml



CAMPAIGN

CHJKN-45T

C/T24 093133
W155 · D118 · H95
top opening diameter 94
practical capacity 450ml



For hot drink



CAMPAIGN

CHRN-2N

C/T24 093140
W150 · D105 · H116 top
opening diameter 99
practical capacity 360ml



CAMPAIGN

CHRN-4N

C/T24 093157
W160 · D116 · H143
top opening diameter 99
practical capacity 700ml



A teapot with a large tea strainer

A large tea strainer is used so that tea can be easily extracted even with a small amount of water, allowing the tea leaves room to expand. Try using fruit in the tea for various combinations to enjoy.
Microwave safe when the metal strainer is removed.



For hot drink



CAMPAIGN
CHEN-36T

C/T24 391321
W133 · D101 · H118
top opening diameter 65
practical capacity 360ml



CAMPAIGN
CHEN-70T

C/T24 391338
W165 · D123 · H151
top opening diameter 82
practical capacity 700ml



For hot drink



CAMPAIGN
CHC-45T

C/T24 091887
W 150 · D 116 · H 132
top opening diameter 82
practical capacity 450ml



CAMPAIGN
CHC-70T

C/T24 091894
W 160 · D 125 · H 152
top opening diameter 82
practical capacity 700ml



For hot drink



CAMPAIGN
CHY-36-W

C/T24 095861
W140 · D100 · H112
top opening diameter 81
practical capacity 360ml



CAMPAIGN
CHY-36-TQG
095878



For hot drink



CAMPAIGN
CHF-45GG

C/T24 096400
W148 · D105 · H108
top opening diameter 81
practical capacity 450ml



For microwave



Lid with tea strainer.



CAMPAIGN
JPP-50W

C/T24 019713
W140 · D114 · H135
top opening diameter 97
practical capacity 500ml

microwave safe including lid



A user-friendly server for both tea and coffee



Additional meshed tea strainer included.

Tea & Coffee Server TIME



For microwave



Do not expose to open flames



CAMPAIGN

TCN-100CBR

C/T24 044463
W169 · D135 · H157
top opening diameter 87
practical capacity (below band)
1,000ml
microwave safe including lid



A round teapot that allows the tea leaves to move around more easily

Enjoy watching the various colors of tea. Since the lid and filter come together, you can pour tea with the lid on.

It also has a hook to hang a tea bag. (JPP)



A lid with filter (JPL)



Can be poured with the lid on.



電子レンジ用



CAMPAIGN

JPL-60-B

C/T24 410947
W162 · D122 · H123
top opening diameter 82
practical capacity 600ml

microwave safe including lid

Tea Press Teapot

A classic tea maker from the Harior Series. Capable of brewing any kind of tea, including black tea and herbal teas.



For hot drink



CAMPAIGN

THJN-2HSV

C/T12 221253
W110 · D78 · H179
top opening diameter 73
practical capacity 300ml

You can enjoy both hot and cold drinks with this heatproof glass cup

We added a cup holder so that you can hold hot drinks. This can be used for both hot and cold drinks and is perfect for any season of the year.



For hot drink



CAMPAIGN

HWC-8SV

C/T24 418653
W98 · D62 · H106
top opening diameter 60
full capacity 250ml



CAMPAIGN

HWC-10SV

C/T24 418660
W98 · D62 · H131
top opening diameter 60
full capacity 310ml

You can prepare delicious cold brew coffee with ease



For hot drink



CAMPAIGN
MCPN-7R

C/T24 164314
W138 · D94 · H208
top opening diameter 88
final capacity 600ml
5cups only



CAMPAIGN
MCPN-7CBR

164307



CAMPAIGN
MCPN-14R

C/T24 164338
W138 · D94 · H294
top opening diameter 88
final capacity 1,000ml
8cups only



CAMPAIGN
MCPN-14CBR

164321

You can make iced coffee with just coffee and water. Pour small amounts of water to wet the entire coffee grounds and drip with a circular movement. When the water is poured, refrigerate it for 8 hours and let the coffee seep. This photo is for illustration purposes only. Coffee grounds are put into the strainer when used.



Pour water to the line.



Easy to hold handle.



The tea strainer's bottom portion can be taken off for easy cleaning.

Cool with ice while brewing
Rapid cooling iced coffee maker

A long ice strainer rapidly cools the dripped coffee, so that iced coffee can be enjoyed immediately. The cone shaped dripper forms a deep coffee ground layer, and thoroughly extracts the flavor of the coffee.



For hot drink



CAMPAIGN
VIC-02B

C/T18 142138
W180 · D120 · H220
top opening diameter 116
practical capacity 700ml
iced coffee 2-4cups
includes 40 sheets of VCF-02M



Compact storage



Putice in the ice strainer



iced coffee can be made instantly

Delicious pour over coffee in a compact size

The dripper is our cone shaped V60. You can enjoy the flavor of a cloth drip with the ease of a paper filter. As the dripper fits inside the server, compact storage is possible. The coffee pot can be used in a microwave, so the drink can be re-heated.



Inside the dripper.



The lid comes off.



For hot drink



Do not expose to open flames



CAMPAIGN
VDI-02B

C/T24 142404
W185 · D127 · H176
top opening diameter 116
practical capacity 700ml
includes 40 sheets of VCF-02M



For microwave



Do not expose to open flames



CAMPAIGN
VCSD-02R

C/T18 020665
W180 · D125 · H220
top opening diameter 92 (pot)
practical capacity (below band)
700ml
Dripper : 1-4cups
includes 40 sheets of VCF-02M and
V60 measuring spoon
microwave safe including lid



CAMPAIGN
VCSD-02CBB
020658



For microwave



Do not expose to open flames



CAMPAIGN
TC-100B

C/T24 044401
W180 · D 138 · H148
top opening diameter 92
practical capacity (below band)
1,000ml
microwave safe including lid



CAMPAIGN
TCD-100B

C/T18 142459
W180 · D 138 · H210
top opening diameter 92 (pot)
practical capacity (below band)
1,000ml
microwave safe including lid



A functionally designed water pitcher



For hot drink



CAMPAIGN
FP-7TNV

C/T15 × 2 035362
W92 · D88 · H190
top opening diameter 80
practical capacity 700ml
* No individual box included.



CAMPAIGN
FP-13TNV

C/T15 × 2 035379
W95 · D94 · H280
top opening diameter 80
practical capacity 1,300ml
* No individual box included.



CAMPAIGN
RPB-7-NV

C/T12 × 2 030510
W135 · D92 · H197
top opening diameter 81
practical capacity 700ml
* No individual box included.



CAMPAIGN
RPBN-14-NV

C/T12 × 2 031180
W135 · D92 · H288
top opening diameter 81
practical capacity 1,400ml
* No individual box included.



For hot drink



CAMPAIGN
RPLN-14-OW

C/T24 031173
W135 · D92 · H288
top opening diameter 81
practical capacity 1,400ml



CAMPAIGN
RPLN-14-CGR

036666



For hot drink



CAMPAIGN
WJN-10-R

C/T 6 × 4 036901
W 95 · D 90 · H 312
(When lid is opened)
top opening diameter 81
practical capacity 1,000ml
* No individual box included.



CAMPAIGN
WJN-10-IBU

036918
* No individual box included.

Tea brewed with only cold water

Place roughly 15 g of tea inside the pot and add water to the 1000 line. (MD-10) Place the lid to cover and refrigerate for 3–6 hours until completion. As the lid includes a mesh filter, you can serve directly from the pot.



Add tea leaves and water.



Refrigerate for 3–6 hours until completion.



Lid comes with a mesh filter.



For hot drink



CAMPAIGN
MDM-7DG

C/T24 034136
φ 90 • H190
top opening diameter 74
practical capacity 700ml



CAMPAIGN
MD-10DG

C/T24 034266
W84 • D82 • H265
top opening diameter 76
practical capacity 1,000ml



Cold brew teapot with a brewing basket tea strainer

Place tea leaves inside the brewing basket tea strainer and add water. Store in the refrigerator for 3–6 hours until complete. Once the tea is infused, you may take off the brewing basket tea strainer before storing.



For hot drink



CAMPAIGN
HCC-7DG

C/T24 034259
W125 • D93 • H203
top opening diameter 88
practical capacity 700ml



CAMPAIGN
HCC-12DG

C/T24 034051
W125 • D93 • H290
top opening diameter 88
practical capacity 1,200ml



The tea strainer's bottom portion is removable for easy washing.





For microwave



CAMPAIGN

RDM-1824

C/T24 419759
W116 · D85 · H90
top opening diameter 65
full capacity 360ml



For microwave



CAMPAIGN

SRM-1824

C/T24 419742
W113 · D80 · H87
top opening diameter 80
full capacity 300ml



For microwave



For oven



CAMPAIGN

HU-3012

C/T12 836631
φ86 · H63
top opening diameter 86
full capacity 170ml



Heatproof glass pie plates

These plates, handy in size, can be used not only as a pie plate but also for any dish for any meal. Made of the transparent heatproof glass, they enhance the look of food.



CAMPAIGN

HPZ-1812

C/T12 420045
 φ200 • H30
 top opening diameter 164
 full capacity 400ml

Heatproof glass salad bowls

Made of heatproof glass, these bowls are microwave-safe and oven-safe. In addition to salad, the bowls are convenient for cereal and cupcakes.



CAMPAIGN

HSB-2812

C/T12 420052
 φ120 • H55
 top opening diameter 120
 full capacity 300ml

Campaign



For microwave



For oven



CAMPAIGN

MKK-2012-OW

C/T12 092198
W83 • D81 • H46
full capacity 110ml



CAMPAIGN

MKK-2012-R

092204



For microwave



For oven



CAMPAIGN

KST-2012-OW

C/T12 092167
S: W111 • D107 • H47
M: W143 • D139 • H62
full capacity 250ml/600ml



CAMPAIGN

KST-2012-R

092174



For microwave



CAMPAIGN

SYTN-2518-OW

C/T18 761742
S: W114 • D112 • H53 • φ105
M: W142 • D138 • H65 • φ131
L: W170 • D168 • H78 • φ160
full capacity 250ml/600ml/1,200ml



CAMPAIGN

SYTN-2518-R

761759



For microwave



CAMPAIGN

KB-1318

C/T18 021495
 SS: W86 · D82 · H50 · φ82
 S : W113 · D105 · H60 · φ105
 M : W137 · D131 · H70 · φ131
 practical capacity 100ml/200ml/400ml



CAMPAIGN

KB-2518

C/T18 093270
 SS: W86 · D82 · H50 · φ82
 S : W113 · D105 · H60 · φ105
 M : W137 · D131 · H70 · φ131
 L : W168 · D160 · H80 · φ160
 practical capacity 100ml/200ml/400ml/800ml



For microwave



For oven



CAMPAIGN

MXP-2606

C/T6 420571
 M : W187 · H115 · φ187
 L : W210 · H120 · φ210
 full capacity 1,500ml/2,200ml



Spare Parts

In order to be able to utilize good products for longer periods of time..

Even if you are careful, occasionally the glass may crack or you may lose parts. Even in these situations there is no need to worry. HARIO products stock plenty of spare parts to replace the missing parts. In order for you to continue using your favorite products for longer period of time, we continue to create products while keeping in mind on how to enhance our after-sales services.



Description

(Example) For Harior spare parts

① — P34



② — CPSW · THJ · THA · THE · THJN
THT · THN

③ — **B-TH-2**

④ — C/T24 510067 ————— ⑤

W79 · D73 · H135

⑥ — CPSW-2/THJ-2/THA-2/THE-2/THJN-2/
THT-2/THN-2 ————— ⑦

① Publishing page

② Product type

③ Article number

④ Quantity per carton

⑤ JAN code No.
*The bottom six numbers are displayed.
The upper seven numbers are 4977642

⑥ Product dimensions(mm)
*Dimensions are for this part only.

⑦ Corresponding product

P7



V60
M-12W

C/T100 716339
W94 · D52 · H38

VD-01 · 02 · 03/VDC-01 · 02/VDS-3012/VDG-01 · 02 · 03/VDM-02/VDP-02/VSA-1006/VAS-8006/VSS-1206/DPW-1 · 3/CF0-2/DA-1/WDC-6/WDW-6/VCSD-02/XVDD-3012/WDF-6/VIG-02/KDC-02

P12



XGS · VSA · VAS · VSS · WDC · WDW
VPOS · WDF
PA-GFF

C/T36 722323
φ80 · H23

XGS-36 · 60 · 80/VSA-1006/VAS-8006/VSS-1206/WDC-6/WDW-6/VPOS-1506/WDF-6

P12



XGS · VSA · VAS · VSS · WDC · WDW
VPOS · WDF
F-GFF

C/T36 722316
φ84 · H28

XGS-36 · 60 · 80/VSA-1006/VAS-8006/VSS-1206/WDC-6/WDW-6/VPOS-1506/WDF-6

P28



MSCS-2TB
FH-MSCS-TB

C/T24 725379
φ94 · H11

MSCS-2TB

P34



CPSS-2
CF-CPSS

C/T24 715738
φ63 · H13

CPSS-2

P34



THW-2
B-THW-2

C/T10 310162
W117 · D73 · H135

THW-2

THW-4
B-THW-4

C/T10 310179
W145 · D90 · H152

THW-4

P34



CPSW · THJ · THA · THE · THJN · THT · THN
B-TH-2

C/T24 510067
W79 · D73 · H135

CPSW-2/THJ-2/THA-2/THE-2/THJN-2/THT-2/THN-2

CPSW · THJ · THA · THT · THN
B-TH-4

C/T24 510043
W96 · D90 · H152

CPSW-4/THJ-4/THA-4/THT-4/THN-4

P34



CPSW · THW · THJ · THA · THE · WDC · WDW · THJN · THT · THN
TFB-200M

C/T100 915671
φ69 · H9

CPSW-2/THW-2/THJ-2/THA-2/THE-2/WDC-6/WDW-6/THJN-2/WDW-20/THT-2/THN-2

CPSW · THW · THJ · THA · THT · THT
TFB-202M

C/T100 915688
φ85 · H10

CPSW-4/THW-4/THJ-4/THA-4/THT-4/THN-4

P34



CPSW · THW · THJ · THA · THE · WDC · WDW · THJN · THT · THN
TF-101M

C/T100 915466
φ64 · H9

CPSW-2/THW-2/THJ-2/THA-2/THE-2/WDC-6/WDW-6/THJN-2/WDW-20/THT-2/THN-2

CPSW · THW · THJ · THA · THT · THN
TF-102M

C/T100 915473
φ80 · H9

CPSW-4/THW-4/THJ-4/THA-4/THT-4/THN-4

P34



CPSW · THW · THJ · THA · THE · WDC · WDW · THJN · THT · THN
TFH-101M

C/T100 915558
φ59 · H5

CPSW-2/THW-2/THJ-2/THA-2/THE-2/WDC-6/WDW-6/THJN-2/WDW-20/THT-2/THN-2

CPSW · THW · THJ · THA · THT · THN
TFH-102M

C/T100 915565
φ77 · H5

CPSW-4/THW-4/THJ-4/THA-4/THT-4/THN-4

P40



TCA · NXA
STP-TCA

C/T120 917613
W34 · D13 · T4

TCA-2/TCA-3/TCA-5/NXA-5

P40



TCA-2
BU-TCA-2

C/T18 507029
φ87 · H231

TCA-2

TCA-3
BU-TCA-3

C/T18 507036
φ87 · H245

TCA-3

TCA-5
BU-TCA-5

C/T18 507050
φ101 · H271

TCA-5

P40



TCA-2
BL-TCA-2

C/T36 508026
φ89 · H110

TCA-2

TCA-3
BL-TCA-3

C/T36 508033
φ100 · H113

TCA-3

TCA-5
BL-TCA-5

C/T36 508057
φ115 · H127

TCA-5

P40



TCA-2.3
ST-TCA-2.3

C/T6 917385
W133 · D111 · H197

TCA-2/TCA-3

TCA-5
ST-TCA-5

C/T6 917392
W133 · D111 · H220

TCA-5

P40



DA-1
BU-DA-1

C/T24 310964
φ84 · H122

DA-1

P40



DA-1
BL-DA-1

C/T36 310971
φ76 · H71

DA-1

P36



CFO-2
D-CFO-2

C/T18 722637
W100 • D120 • H80

CFO-2

P39



DPW • DFN (3 sheets)
FD-1

C/T100 916371
W121 • H103

DPW-1 /DFN-1

DPW • DFN (3 sheets)
FD-3

C/T100 916388
W151 • H110

DPW-3 /DFN-3

P39



DPW-1
DFN-1

C/T100 916357
φ94

DPW-1

DPW-3
DFN-3

C/T100 916364
φ106

DPW-3

P40



MCA-3
STP-MCA

C/T60 917606
W48 • D16 • T5

MCA-3

P40



MCA-3
BU-MCA-3

C/T18 503335
φ118 • H187

MCA-3

P40



SCA • MCA
PA-DS

C/T96 917705
φ65 • H35

SCA-5/MCA-3/BU-MCA-3/BU-SCA-5

P40



MCA-3
BL-MCA-3

C/T36 504332
φ109 • H107

MCA-3

P40



TCA-2.3
F-TCA-2.3

C/T12 917361
φ92 • H63

TCA-2/TCA-3

TCA-5
F-TCA-5

C/T12 917378
φ106 • H71

TCA-5

P40



NXA • TCA
PA-TC-N

C/T120 917552
φ36 • H35

NXA-5/TCA-2/TCA-3/TCA-5/BU-TCA-2/BU-TCA-3/BU-TCA-5/BU-NXA-5

P40



MCA · TCA · NXA · SCA · DA
BA-15

C/T100 915015

MCA-3/TCA-2/TCA-3/TCA-5/NXA-5/SCA-5/DA-1

P40



MCA · TCA · NXA · SCA · RCR
A-55

C/T100 915077
Length of the wick 100

MCA-3/TCA-2/TCA-3/TCA-5/NXA-5/SCA-5/RCR-50/AL-5DB/AL-5B-NCA/A-5

DA
A-15

C/T100 715295
Length of the wick 65

DA-1/AL-1SV/A-1

P40



MCA · TCA · NXA · SCA · RCR
A-5

C/T100 915107
Length of the wick 100

MCA-3/TCA-2/TCA-3/TCA-5/NXA-5/SCA-5/RCR-50/AL-5DB/AL-5B-NCA

DA
A-1

C/T100 715301
Length of the wick 65

DA-1/AL-1SV

P41



NXA-5
BU-NXA-5

C/T12 303317
φ109 · H271

NXA-5

P41



NXA-5
BL-NXA-5

C/T24 304314
φ115 · H127

NXA-5

P41



NXA · SCA
F-103K

C/T30 715202
φ59

NXA-5/SCA-5

P41



SCA-5
BU-SCA-5

C/T8 303324
φ130 · H252

SCA-5

P41



SCA-5
BL-SCA-5

C/T8 304321
φ150 · H195

SCA-5

P41



NXA · SCA · RCR
AL-5B-NCA

C/T60 723733
W95 · D76 · H75

NXA-5/SCA-5/RCR-50

P40



MCA-3 (100 sheets)
CF-103E

C/T100 915367
φ80

MCA-3

P40



TCA · NXA · SCA (5 sheets)
FS-103

C/T100 915350
φ108

TCA-2/TCA-3/TCA-5/NXA-5/SCA-5

P40



DA-1 (5 sheets)
FS-101

C/T100 715264
φ55

DA-1

P40



MCA-3 (100 sheets)
F-103MN

C/T36 915404
φ58

MCA-3

P40



TCA · NXA · SCA
F-103S

C/T100 915152
φ61

TCA-2/TCA-3/TCA-5/NXA-5/SCA-5

P40



DA-1
F-101P

C/T60 715271
φ55 · H37

DA-1

P40



MCA · TCA
AL-5DB

C/T60 915022
W97 · D77 · H71

MCA-3/TCA-2/TCA-3/TCA-5

P40



DA-1
AL-1SV

C/T18 715288
φ65 · H45

DA-1

P40



MCA · TCA · PTN · NXA · SCA
M-23DB

C/T100 716421

MCA-3/TCA-2/TCA-3/TCA-5/PTN-5/NXA-5/SCA-5

P49



CQT · CZ
SH-CQT-BR

C/T100 402973
φ22 · H97

CQT-45/CZ-1

P51



FIB · FIBP
S-FIB-30

C/T24 718227
φ47 · H53

FIB-30/FIBP-40

P52

FIB · FIE · KAB
S-FIB

C/T24 725799
φ59 · H55

FIB-75 · FIE-80 · KAB-120

P56



CHZ-30
C-CHN-30

C/T24 717145
φ86 · H54

CHZ-30

CHZ-45
C-CHN-45

C/T24 717152
φ96 · H56

CHZ-45

P58



OTM · HDT
F-OTM-B

C/T24 920804
W103 · D92 · H18

OTM-1/HDT-M

OTM · HDT
F-OTM-NW

C/T24 920811
W103 · D92 · H18

OTM-1/HDT-M

P58



OTM · HDT
S-OTM-B08

C/T18 920873
W120 · D65 · H88

OTM-1 /HDT-M

OTM · HDT
S-OTM-NW08

C/T18 920880
W120 · D65 · H88

OTM-1/HDT-M

P62



TPC-45
S-TPC-45

C/T24 310186
φ56 · H95

TPC-45

TPC-70
S-TPC-70

C/T24 310193
φ71 · H118

TPC-70

P44



WDC · WDW · WDF
BU-WDC-6

C/T12 309197
φ116 · H160

WDC-6/WDW-6/WDF-6

P44



WDC · WDW
BK-WDC-6

C/T48 309203
φ65 · H110

WDC-6/WDW-6

P44



WDC · WDW · WDF
C-WDC-6

C/T12 725164
W24 · D11 · H40

WDC-6/WDW-6/WDW-20/WDF-6

P44



WDC · WDW · WDF
S-WDC-6

C/T24 725157
φ19 · H31

WDC-6/WDW-6/WDW-20/WDF-6

P44



WDC · WDW · SBS (50 sheets)
CF-WDC-6

C/T24 723429
φ57

WDC-6/WDW-6/WDW-20/SBS-5

P44



PTN-5
BU-PT-5

C/T12 503595
φ148 · H100

PTN-5

P44



PTN-5
BL-PT-5

C/T8 504592
φ141 · H 120

PTN-5

P44




PTN-5
PA-PTN-5

C/T24 717572
φ69 · H 35

PTN-5

P71



WP-11
B-WP-11

C/T12 520028
φ120 • H201

WP-11

P71




WP
PA-WP2

C/T60 718203
φ45

WP-11/WP-1

P71




WP-1
B-WP-1

C/T12 520011
φ120 • H185

WP-1

P74



HW
HW-8SP

C/T6×4 419018
φ55 • H119

HW-8

P79



GNN • GIS
FT-GN

C/T24 726062
φ55 • H38

GNN-150/GNN-200/GIS-200

P79



GNN • GIS • MNN • MIS
FG-MN

C/T24 726093
φ80 • H16

GNN-150/GNN-200/GIS-200/MNN-165/MNN-225/MNN-255/MIS-23/MIS-26

P79



GNN
F-GN-150

C/T6 726079
φ150 • H77


GNN-150

GNN • GIS
F-TND-200

C/T6 718753
φ200 • H105

GNN-200/GIS-200

P81



MNN-165
F-MN-165

C/T6 718937
φ165 • H55

MNN-165

MNN-225 • MIS-23
F-MN-225

C/T6 718944
φ225 • H70

MNN-225/MIS-23

MNN-255 • MIS-26
F-MN-255

C/T6 718951
φ255 • H77

MNN-255/MIS-26

P88



DBS
F-DBS

C/T48 722934
φ45 • H43

DBS-120 /DBS-240

P62



QSA · QSM
F-QS

C/T18 917262
φ51 · H45

QSA-1/QSM-1

P62



QSA · QSM
C-QSA

C/T100 917187
φ16 · L30

QSA-1/QSM-1

P63




JP · TDG
F-JP-2

C/T36 717305
φ75 · H47

JP-2/TDG-2

P63



JP
C-JP

C/T25 916876
φ37 · H14

JP-2/JP-4

P65



CHAN-2
B-CHAN-2

C/T24 308909
W107 · D102 · H78


CHAN-2

CHAN-4
B-CHAN-4

C/T24 308916
φ115 · H97

CHAN-4

P65



CHAN-2
TUS-CHAN-2

C/T12 708433
φ68 · H121

CHAN-2

CHAN-4
TUS-CHAN-4

C/T12 708440
φ68 · H143

CHAN-4

P65



HMJ3-1000
F-HMJ-1000

C/T12 917903
φ114 · H85

HMJ3-1000

P65



HMJ3-1000
HMJ3-1000SP

C/T6 010192
W218 · D152 · H148

HMJ3-1000

P69



IDX · IDM · IDS
S-ID

C/T24 510760
W78 · D75 · H72

IDX-2/IDM-2/IDS-2

P101



HWC-8
B-HWC-8

C/T6×4 510081
φ60 · H105

HWC-8

HWC-10
B-HWC-10

C/T6×4 510098
φ60 · H130

HWC-10

P102



MCPN
S-MCPN-14CBR

C/T24 718111
W86 · D80 · H166

MCPN-7/MCPN-14

P105



MDM-7
F-MDM-7DG

C/T24 725836
W84 · D82 · H47

MDM-7

P105



MD-10
F-MD-10DG

C/T24 725782
W84 · D82 · H47

MD-10

P105



HCC
S-HCC-12DG

C/T24 725775
W86 · D80 · H166

HCC-7/HCC-12

P99



CHJMN • CHRN • CHJKN
F-CHJ-45

C/T24 918160
φ87 • H32

CHJMN-30/CHJMN-45/CHRN-2N/
CHRN-4N/CHJKN-45

CHJMN-70
F-QSR-30

C/T24 917248
φ97 • H33

CHJMN-70

P99



CHJMN • CHJKN
C-CHJ

C/T18 917170
φ77 • H60

CHJMN-30/CHJMN-45/CHJKN-45

CHJMN-70
C-CHJM-70

C/T24 918177
φ86 • H64

CHJMN-70

P99



CHRN • CHY
LS-36

C/T24 916715
W85 • D77 • H79

CHRN-2 • CHY-36

CHRN • CHF
LS-65

C/T24 916722
W85 • D77 • H93

CHRN-4/CHF-45

P100



CHEN-36
F-CHEN-36

C/T12 917293
φ70 • H43

CHEN-36

CHEN • JP • TDG
F-CHEN-70

C/T12 917255
φ86 • H57

CHEN-70/JP-4/TDG-4

P100



CHEN-36
C-CHEN-36

C/T12 916852
φ68 • H75

CHEN-36

CHEN • CHC
C-CHEN-70

C/T12 916869
φ85 • H95

CHEN-70/CHC-45/CHC-70